



The Waterson

at Hunter's Ridge

6082 Fallen Tree Lane • Burlington, KY
2,044 SF • Home Site HR265

\$436,000



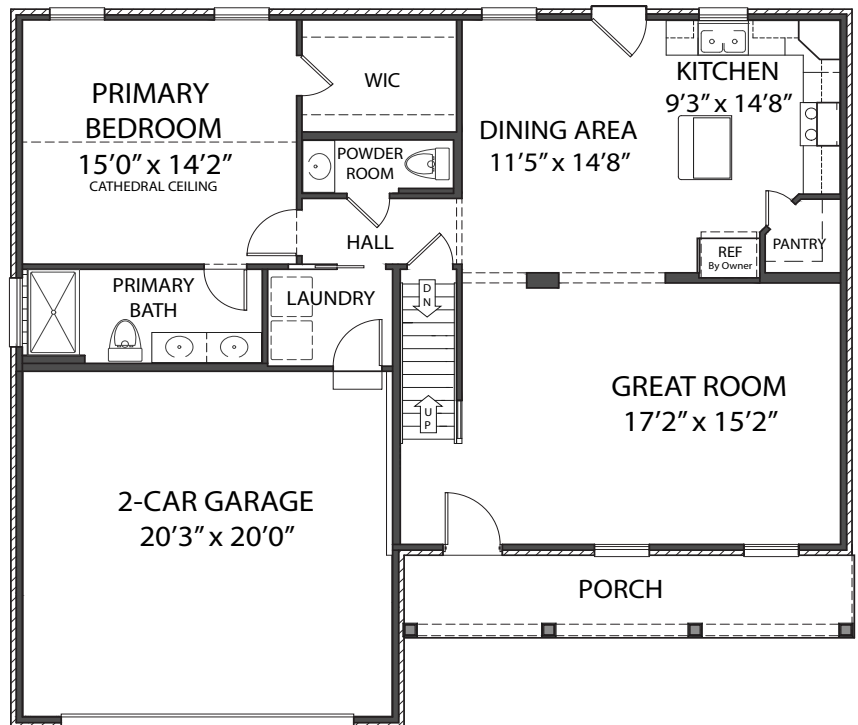
Home Details

- 3 Beds / 2.5 Baths
- 1st Floor 810 SF
- 2nd Floor 1,234 SF
- Lower Level Unfinished
- Total square feet 2,044 SF
- HERS score 49

1st Floor

Features

- Open Kitchen, Dining & Great Room
- Walk-in Pantry
- Primary Bedroom with Cathedral Ceiling & Walk-in Closet
- Main Floor Laundry
- Deck with Steps
- 2-Car Garage



Brochure is for illustration purposes only.

6/9/26

Plan and pricing subject to change.



www.arlinghaus.com



The Waterson

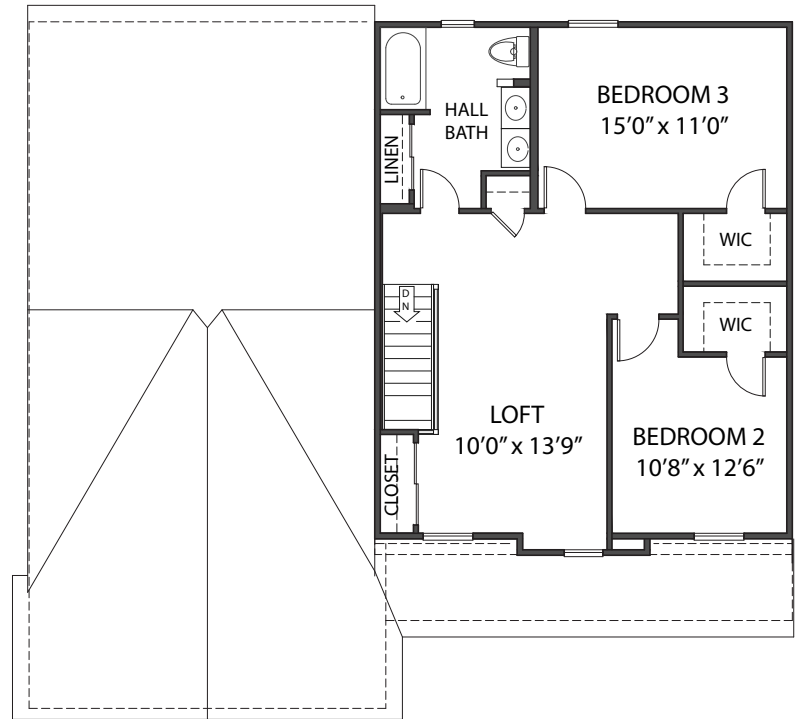
at Hunter's Ridge

6082 Fallen Tree Lane • Burlington, KY
2,044 SF • Home Site HR265

2nd Floor

Features

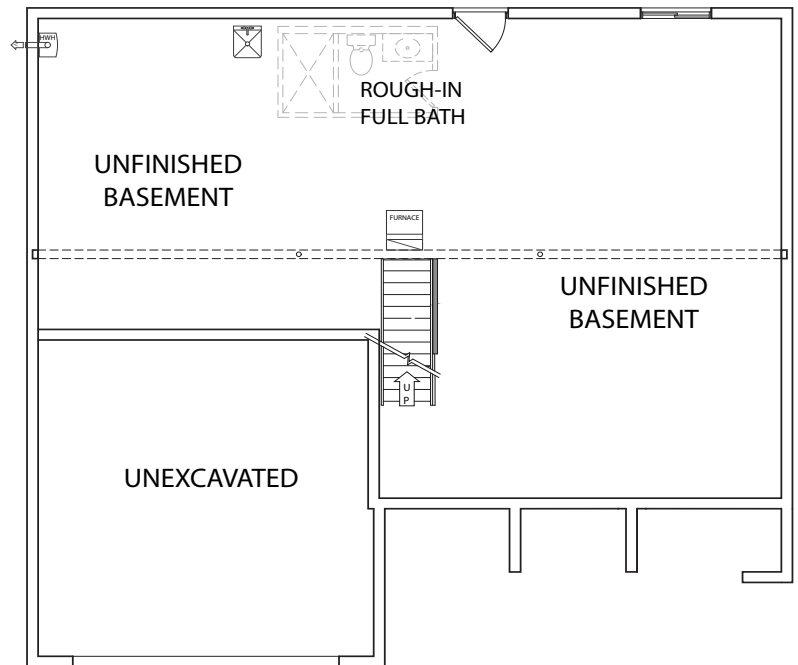
- Two Additional Bedrooms with Walk-in Closets
- Flexible Loft Area with Storage Closet
- Second Floor Laundry



Lower Level

Features

- Unfinished Basement
- Rough-in For Full Bath
- Walkout to Concrete Patio
- High Efficiency Gas Furnace & Electric A/C
- Gas Tankless Water Heater



6/9/26

Brochure is for illustration purposes only.
Plan and pricing subject to change.



www.arlinghaus.com



The Waterson

at Hunter's Ridge

6082 Fallen Tree Lane • Burlington, KY
2,044 SF • Home Site HR265

Home Selections

EXTERIOR



Trim

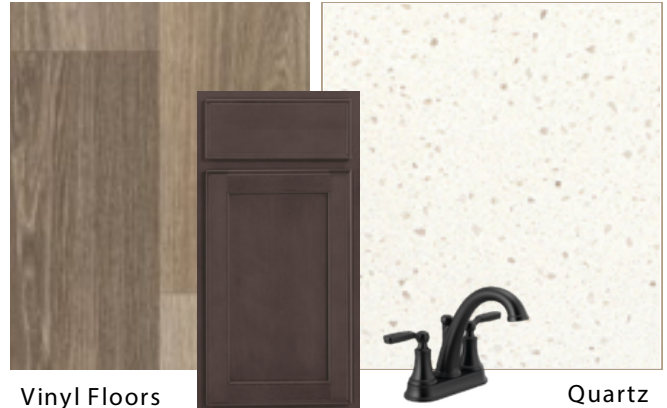
KITCHEN



Vinyl Floors

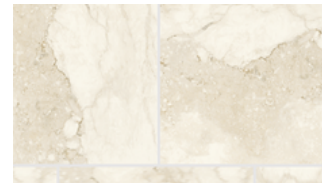
Granite

BATHS



Vinyl Floors

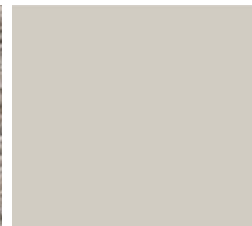
Quartz



Primary Bath Shower Tile



Carpet



Interior Paint



Brochure is for illustration purposes only.

Colors are subject to change and may vary

6/9/26

based on your screen.



www.arlinghaus.com