



# The Waterson

at Ballyshannon

7909 Emerson Place • Union, KY  
2,044 SF • Home Site BS182

## \$455,000



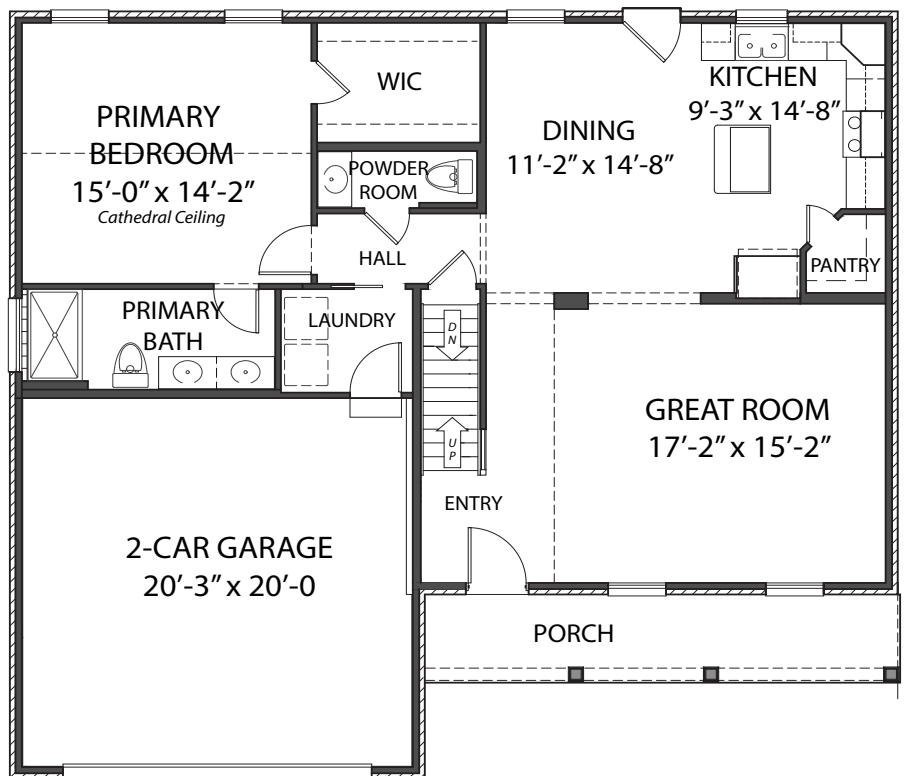
### Home Details

- 3 Beds / 2.5 Baths
- 1st Floor 1,234 SF
- 2nd Floor 810 SF
- Lower Level Unfinished
- Total square feet 2,044 SF
- HERS score 49

### 1st Floor

#### Features

- Open Kitchen, Dining & Great Room
- Walk-in Pantry
- Primary Bedroom with Cathedral Ceiling & Walk-in Closet
- Primary Bath with Tile Shower
- Main Floor Laundry
- Walkout to Patio
- 2-Car Garage



6/12/26

Brochure is for illustration purposes only.  
Plan and pricing subject to change.



[www.arlinghaus.com](http://www.arlinghaus.com)



# The Waterson

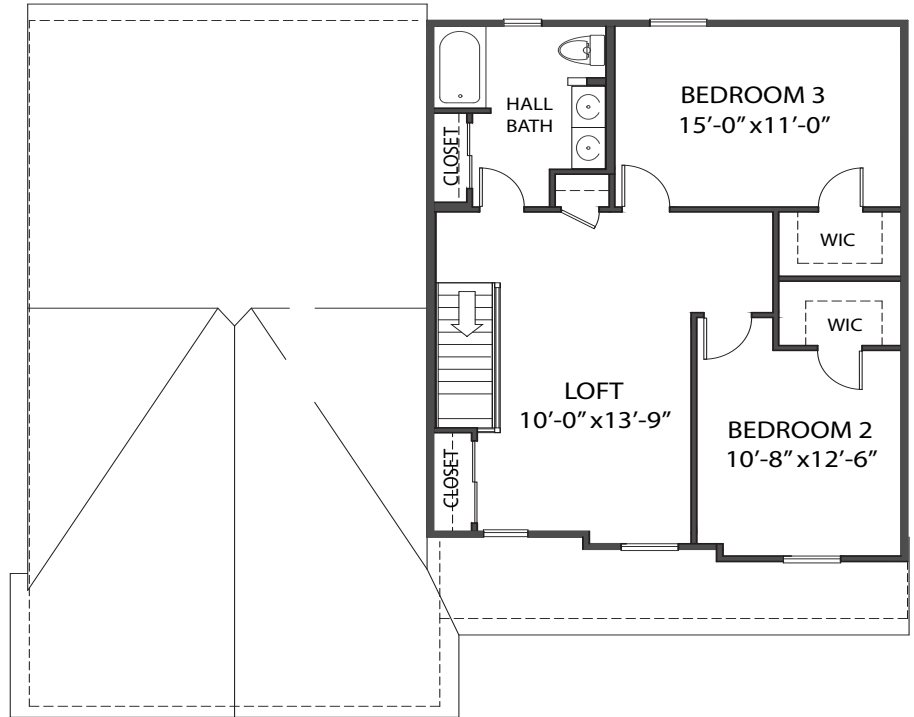
at Ballyshannon

7909 Emerson Place • Union, KY  
Home Site BS182

## 2nd Floor

### Features

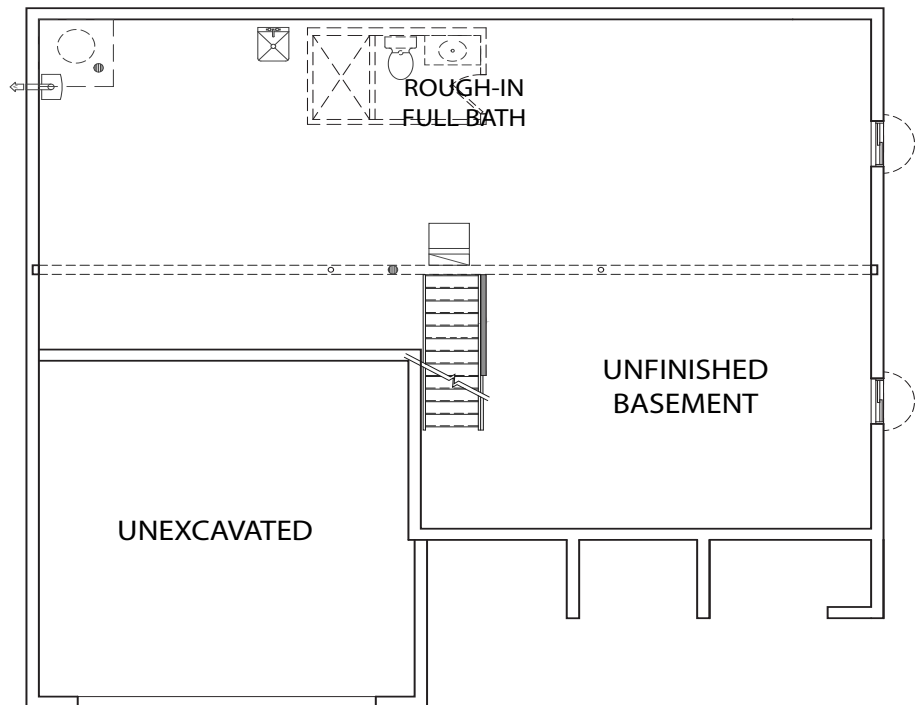
- Two Additional Bedrooms with Walk-in Closets
- Flexible Loft Area with Storage Closet
- Hall Bathroom with Double Bowl Sink



## Lower Level

### Features

- Unfinished Basement
- Rough-in For Full Bath
- High Efficiency Gas Furnace & Electric A/C
- Gas Tankless Water Heater



6/12/26

Brochure is for illustration purposes only.  
Plan and pricing subject to change.



[www.arlinghaus.com](http://www.arlinghaus.com)



# The Waterson

at Ballyshannon

7909 Emerson Place • Union, KY  
Home Site BS182

## Home Selections

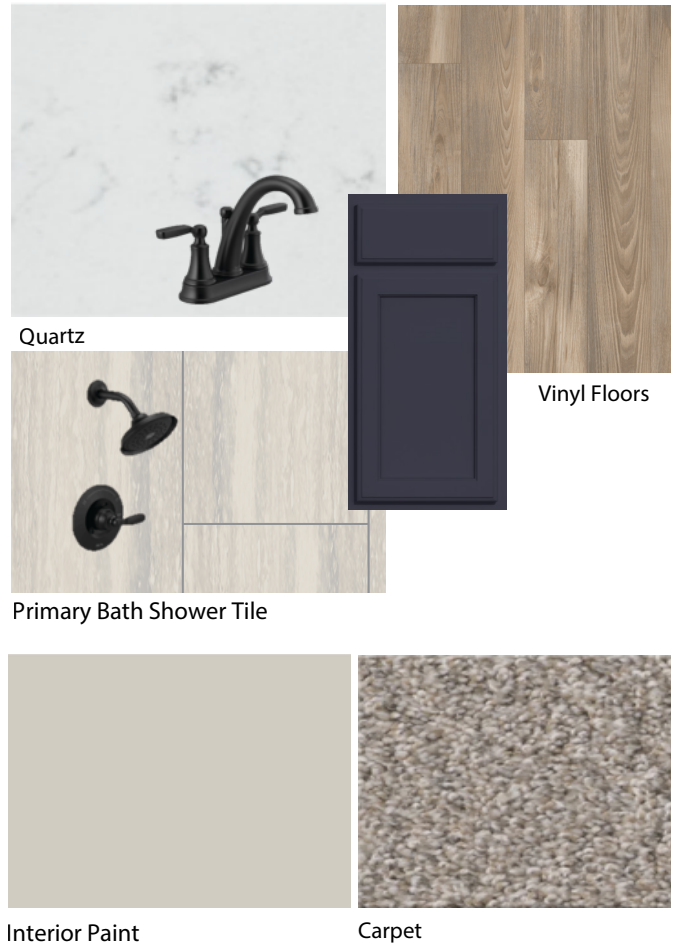
### EXTERIOR



### KITCHEN



### BATHS



Brochure is for illustration purposes only.

Colors are subject to change and may vary

6/12/26 based on your screen.



[www.arlinghaus.com](http://www.arlinghaus.com)