



# The Lancaster

at North Pointe

1113 Camden Court • Hebron, KY  
2,646 SF • Home Site NP632

**\$474,000**



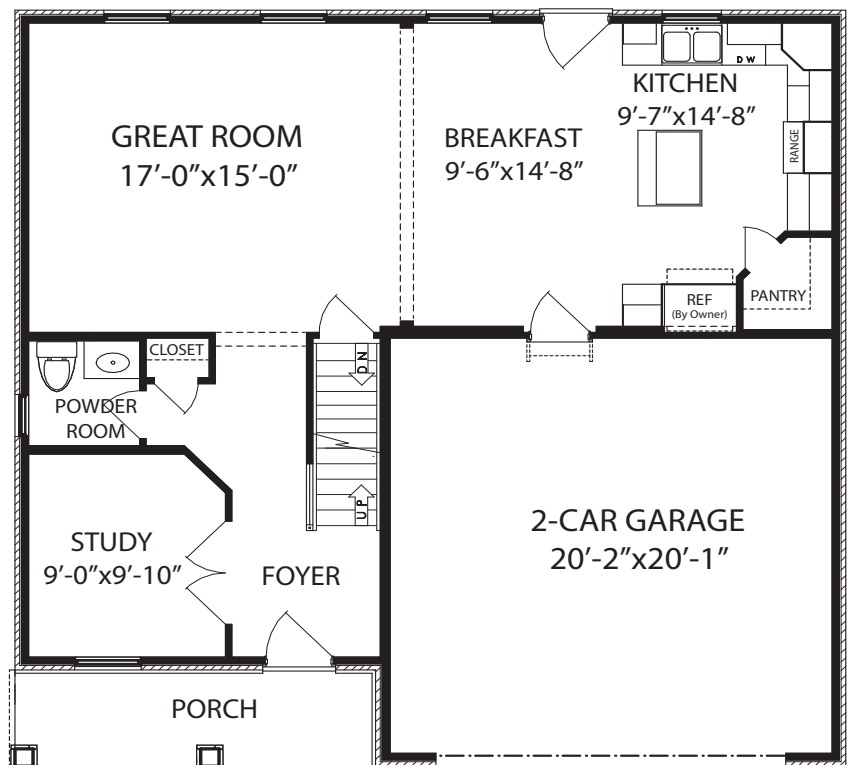
## Home Details

- 4 Beds / 2 Full, 2 Half Baths
- 1st Floor 881 SF
- 2nd Floor 1,234 SF
- Lower Level 531 SF
- Total square feet 2,646 SF
- HERS score 49

## 1st Floor

### Features

- Open Kitchen, Dining & Great Room
- Walk-in Pantry
- Private Study with French Doors
- Deck with Steps
- 2-Car Garage



5/29/26

Brochure is for illustration purposes only.  
Plan and pricing subject to change.



[www.arlinghaus.com](http://www.arlinghaus.com)



# The Lancaster

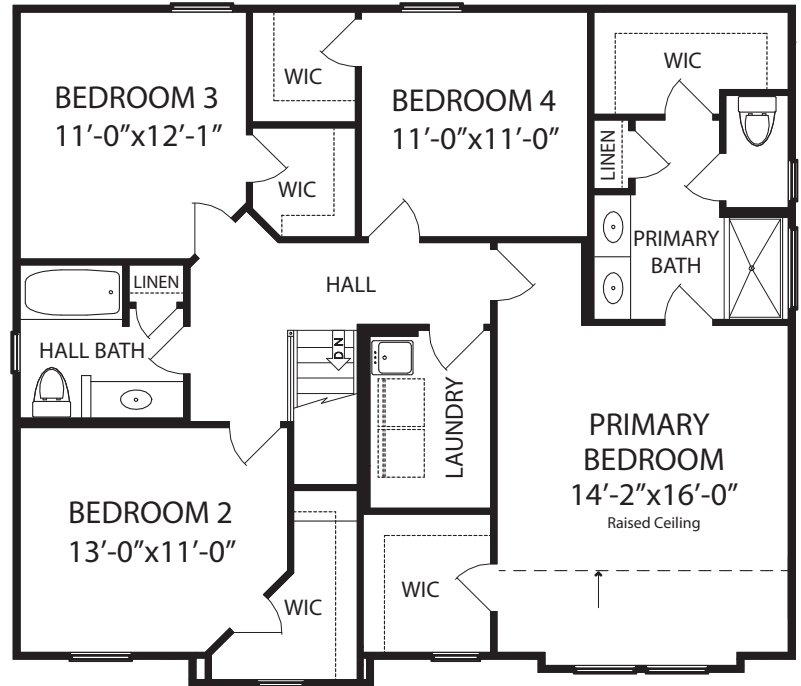
at North Pointe

1113 Camden Court • Hebron, KY  
2,646 SF • Home Site NP632

## 2nd Floor

### Features

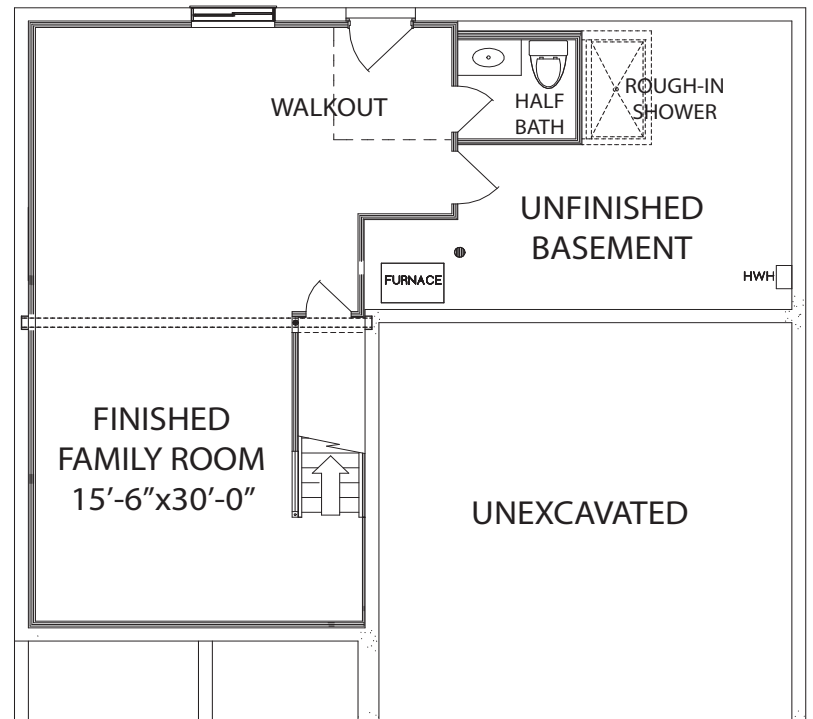
- Large Primary Bedroom with Two Walk-in Closets & Raised Ceiling
- Primary Bath with Tile Shower
- Three Additional Bedrooms with Walk-in Closets
- Second Floor Laundry



## Lower Level

### Features

- Finished Family Room & Half Bath
- Rough-in For Shower
- Walkout to Concrete Patio
- High Efficiency Gas Furnace & Electric A/C
- Gas Tankless Water Heater



Brochure is for illustration purposes only.

5/29/26 Plan and pricing subject to change.



[www.arlinghaus.com](http://www.arlinghaus.com)



# The Lancaster

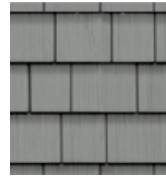
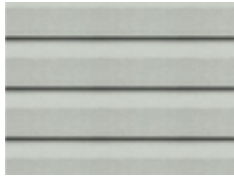
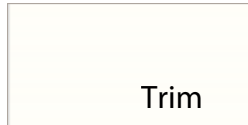
at North Pointe

1113 Camden Court • Hebron, KY  
2,646 SF • Home Site NP632

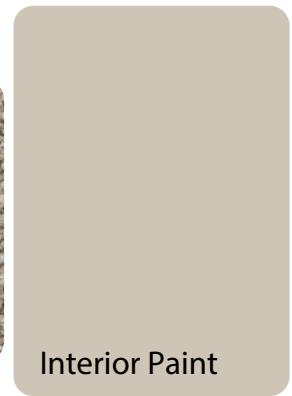
## Home Selections



### EXTERIOR



Carpet



Interior Paint

### Vinyl Floors

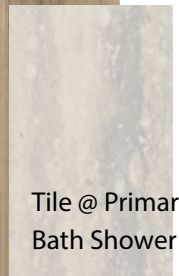
### KITCHEN



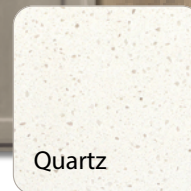
Granite

### Vinyl Floors

### BATHS



Tile @ Primary Bath Shower



Quartz



Brochure is for illustration purposes only.

Colors are subject to change and may vary

5/29/26 based on your screen.



[www.arlinghaus.com](http://www.arlinghaus.com)