



The Morgan

at Meadow Cove

10220 Broadmeadow Dr • Independence, KY
2,922 SF • Home Site MC16

\$487,000



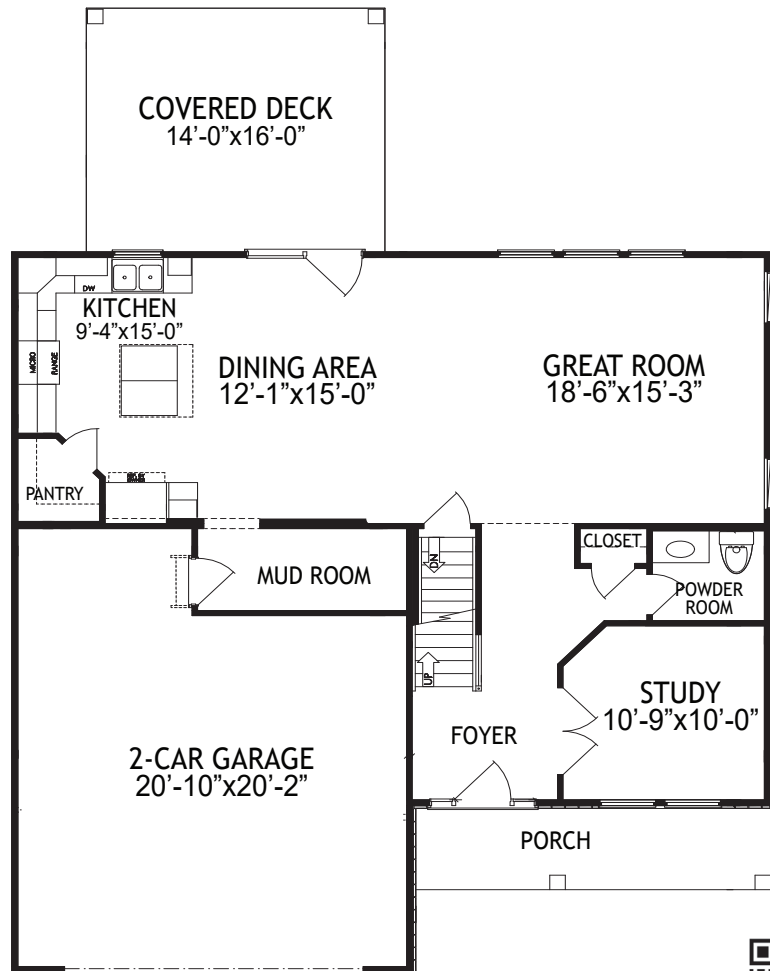
Home Details

- 4 Beds / 2 Full, 2 Half Baths
- 1st Floor 1,019 SF
- 2nd Floor 1,325 SF
- Lower Level 578 SF
- Total square feet 2,922 SF
- HERS score 49

1st Floor

Features

- Open Kitchen, Dining & Great Room
- Walk-in Pantry & Larger Kitchen Island
- Mudroom
- Private Study with French Doors
- Covered Deck
- 2-Car Garage with Storage Space



Brochure is for illustration purposes only.

5/11/26

Plan and pricing subject to change.



www.arlinghaus.com



The Morgan

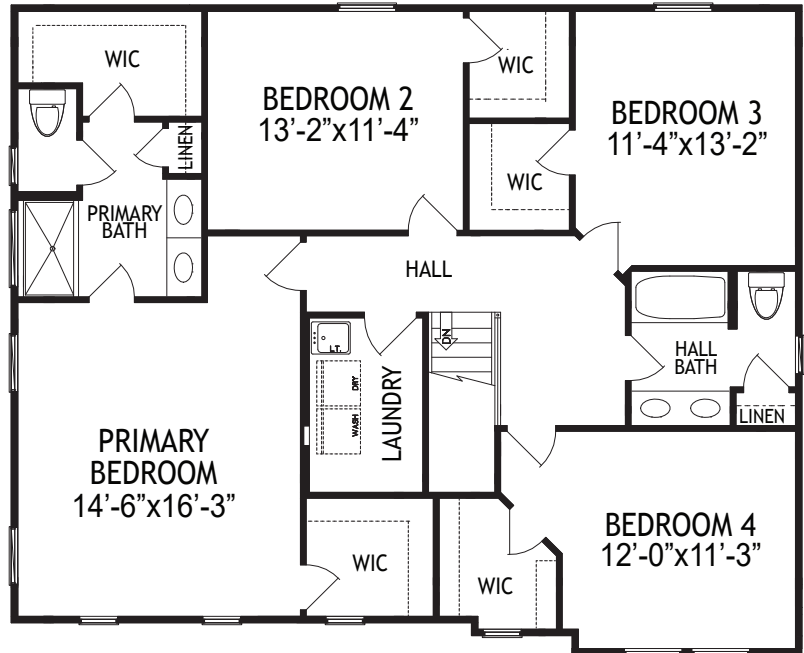
at Meadow Cove

10220 Broadmeadow Dr • Independence, KY
2,922 SF • Home Site MC16

2nd Floor

Features

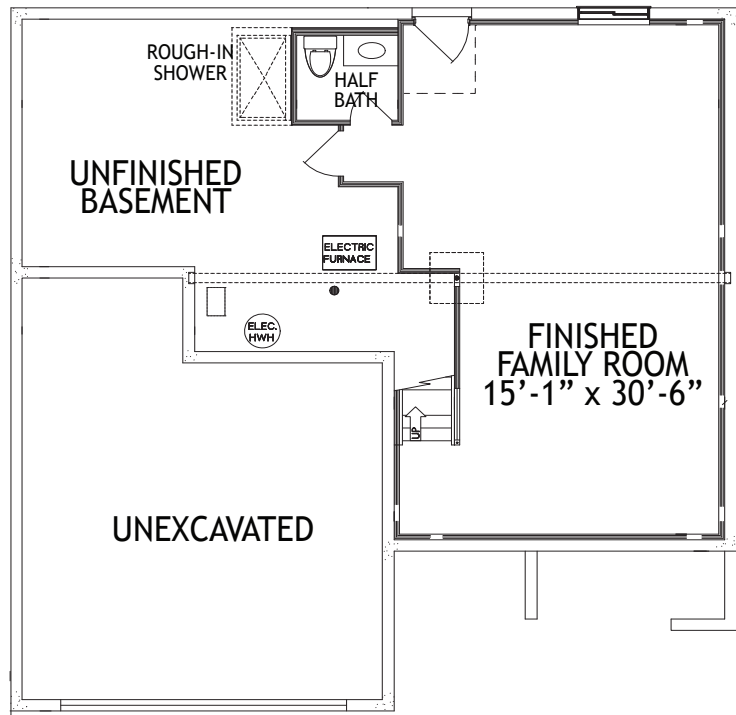
- Large Primary Bedroom & Bath with Two Walk-in Closets
- Primary Bath with Tile Shower
- Second Floor Laundry
- Three Additional Bedrooms with Walk-in Closets



Lower Level

Features

- Finished Family Room & Half Bath
- Rough-in for Future Shower
- Electric Furnace & A/C Unit
- Electric Hot Water Heater



Brochure is for illustration purposes only.

5/11/26 Plan and pricing subject to change.



www.arlinghaus.com



The Morgan

at Meadow Cove

10220 Broadmeadow Dr • Independence, KY
2,922 SF • Home Site MC16

Home Selections

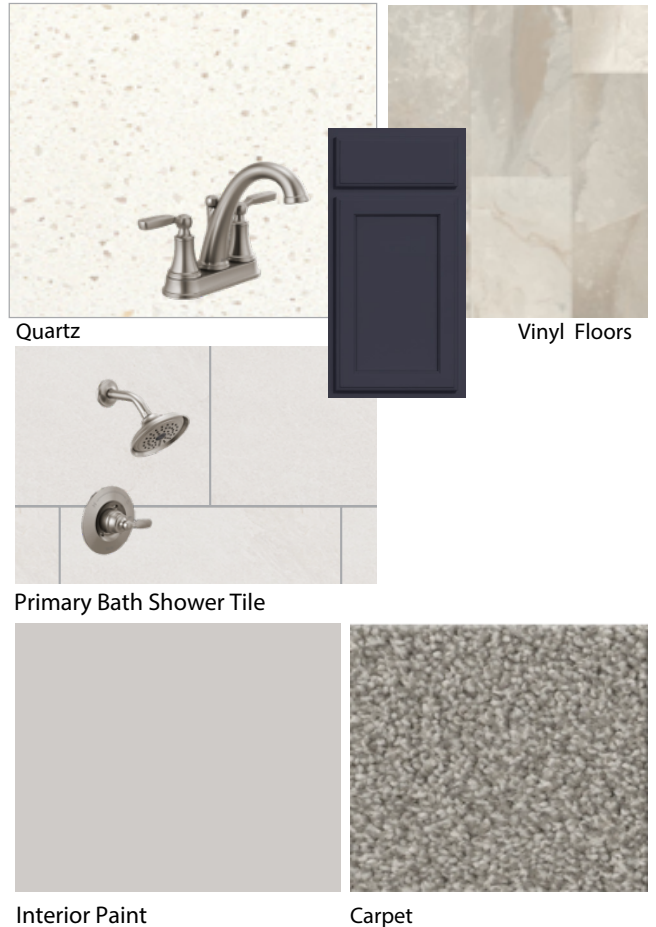
EXTERIOR



KITCHEN



BATHS



Brochure is for illustration purposes only.

Colors are subject to change and may vary

5/11/26 based on your screen.



www.arlinghaus.com