



# The Rosewood

at North Pointe

1530 Autumn Ridge Drive • Hebron, KY  
2,753 SF • Home Site NP552

**\$543,000**



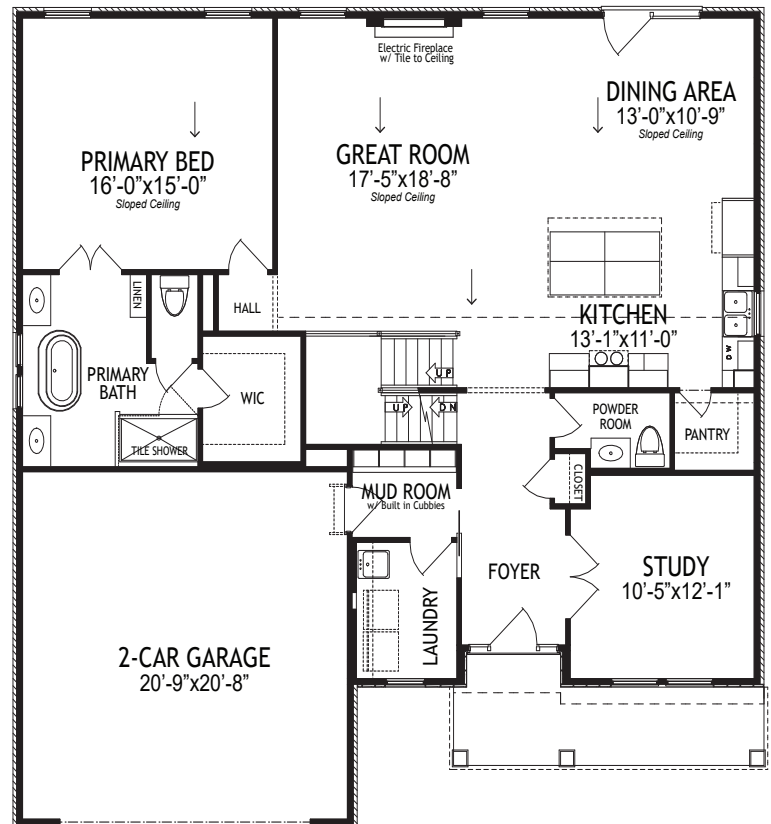
## Home Details

- 4 Beds / 2.5 Baths
- 1st Floor 1,100 SF
- 2nd Floor 1,653 SF
- Lower Level Unfinished
- Total Square Feet 2,753 SF
- HERS score 49

## 1st Floor

### Features

- Open Kitchen, Dining & Great Room
- Cathedral Ceiling
- Electric Fireplace with Tile to Ceiling
- Walk-in Pantry
- Mud Room with Built-in Cubbies
- Study with French Doors
- Primary Suite with Sloped Ceiling
- Primary Bath with Free-Standing Soaking Tub & Tile Shower
- Wood Deck with Stairs
- 2-Car Garage





# The Rosewood

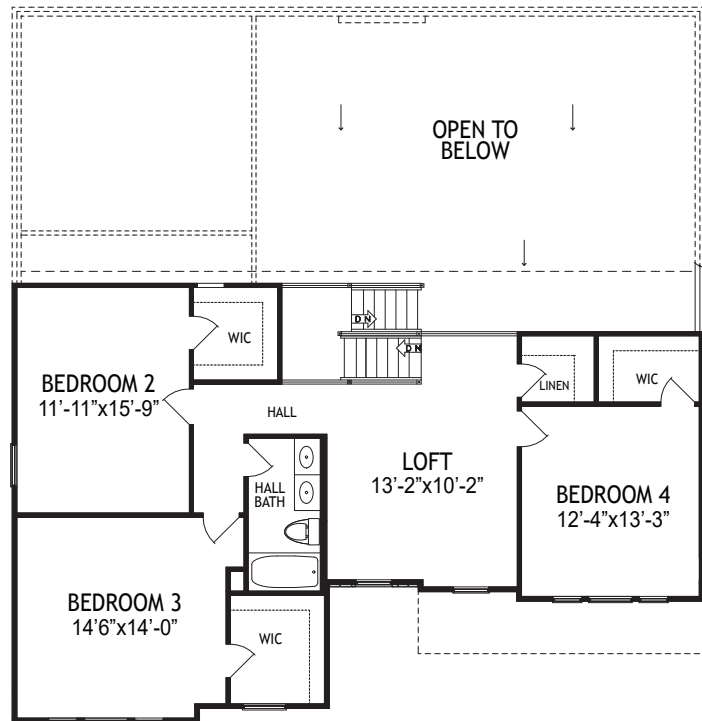
at North Pointe

1530 Autumn Ridge Drive • Hebron, KY  
2,753 SF • Home Site NP552

## 2nd Floor

### Features

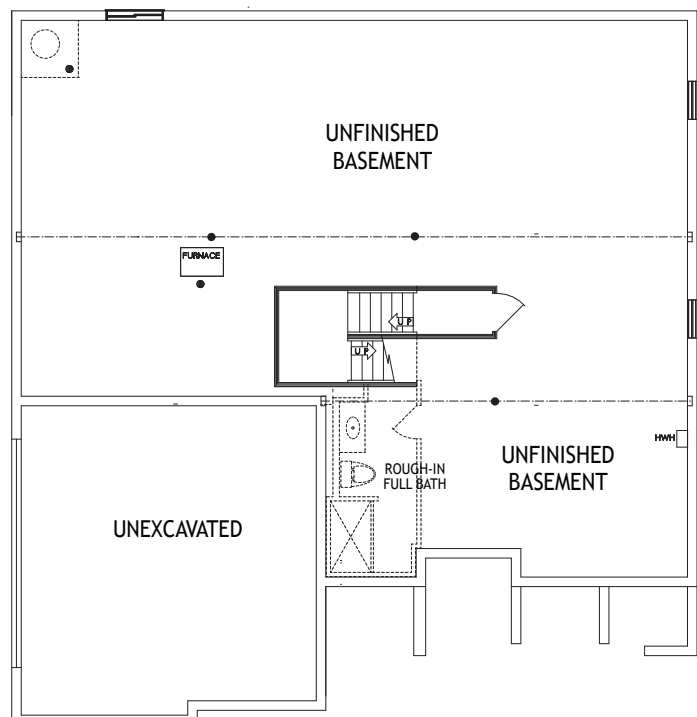
- Open Staircase to Great Room & Kitchen Below
- Three Bedrooms with Walk-in Closets
- Flexible Loft Area with Walk-in Storage Closet
- Hall Bath with Double Vanity



## Lower Level

### Features

- Unfinished Basement
- Rough-in For Full Bath
- High Efficiency Gas Furnace with Electric A/C
- Tankless Water Heater





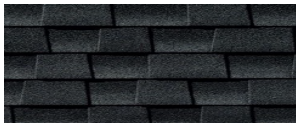
# The Rosewood

at North Pointe

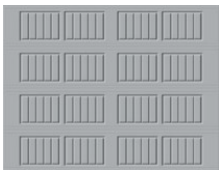
1530 Autumn Ridge Drive • Hebron, KY  
Home Site NP552

## Home Selections

### EXTERIOR



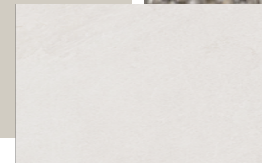
TRIM



Interior Walls



Carpet

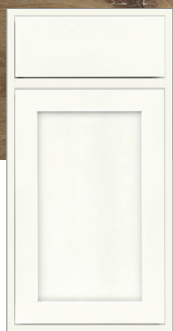


Tile Fireplace

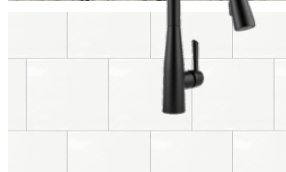
### KITCHEN



LVP Floors



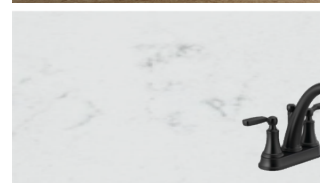
Granite



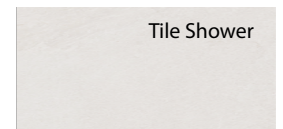
Tile Backsplash

### BATHS

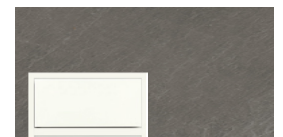
LVP Floors



Quartz



Tile Shower



Tile Floor

