



# The Mariemont

at Ballyshannon

6808 Cloverfield Way • Union, KY  
2,974 SF • Home Site BS176

**\$538,000**



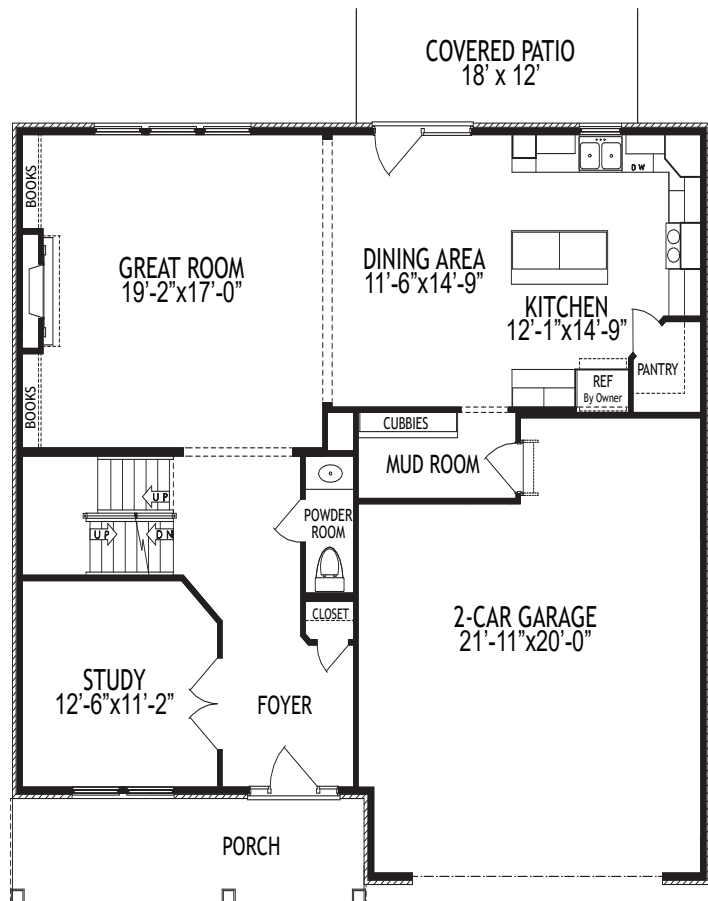
## Home Details

- 4 Beds / 2.5 Baths
- 1st Floor 1,221 SF
- 2nd Floor 1,753 SF
- Lower Level Unfinished
- Total square feet 2,974 SF
- HERS score 49

## 1st Floor

### Features

- Open Kitchen, Dining & Great Room
- 9-Foot Ceilings
- Walk-In Pantry
- Electric Fireplace with Built-In Bookshelves
- Mudroom with Built-In Cubbies
- Private Study with French Doors
- Covered Outdoor Patio
- 2-Car Garage





# The Mariemont

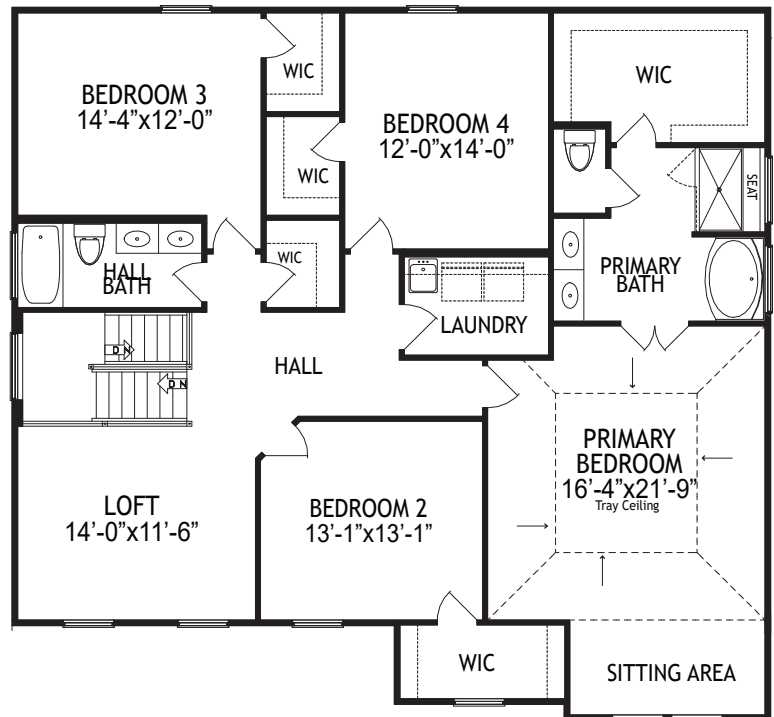
at Ballyshannon

6808 Cloverfield Way • Union, KY  
2,974 SF • Home Site BS176

## 2nd Floor

### Features

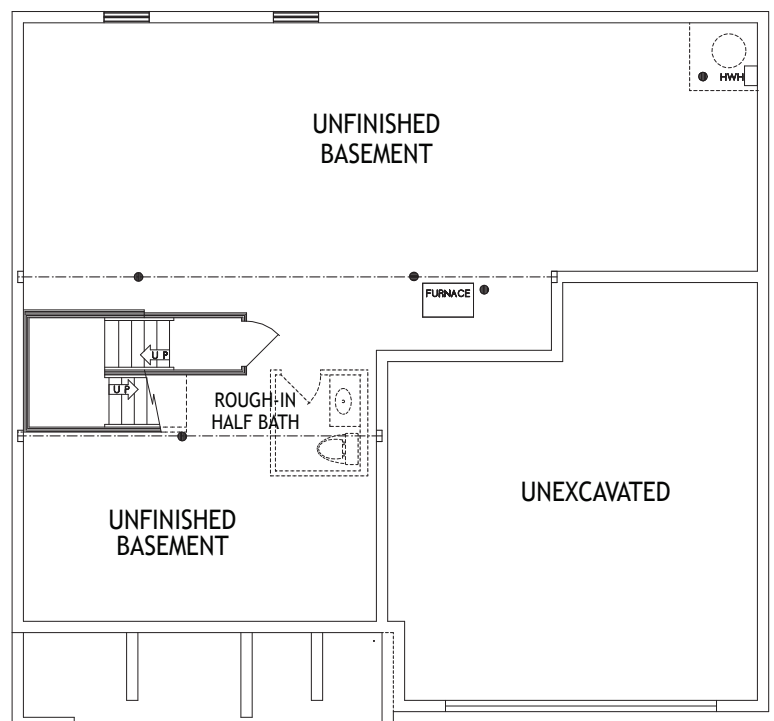
- Primary Bedroom with Tray Ceiling & Seating Area
- Primary Bath with Walk-in Closet, Garden Tub & Tile Shower
- Three Secondary Beds with Walk-in Closets
- Hall Bathroom with Double Vanity
- Flexible Loft Area
- Second Floor Laundry



## Lower Level

### Features

- Unfinished Basement
- Rough-In for Half Bath
- High Efficiency Gas Furnace with Electric A/C
- Gas Tankless Water Heater





# The Mariemont

at Ballyshannon

6808 Cloverfield Way • Union, KY  
Home Site BS176

## Home Selections



EXTERIOR



Trim

