



The Lancaster

at Ballyshannon

6809 Cloverfield Way • Union, KY
2,116 SF • Home Site BS172

\$452,000



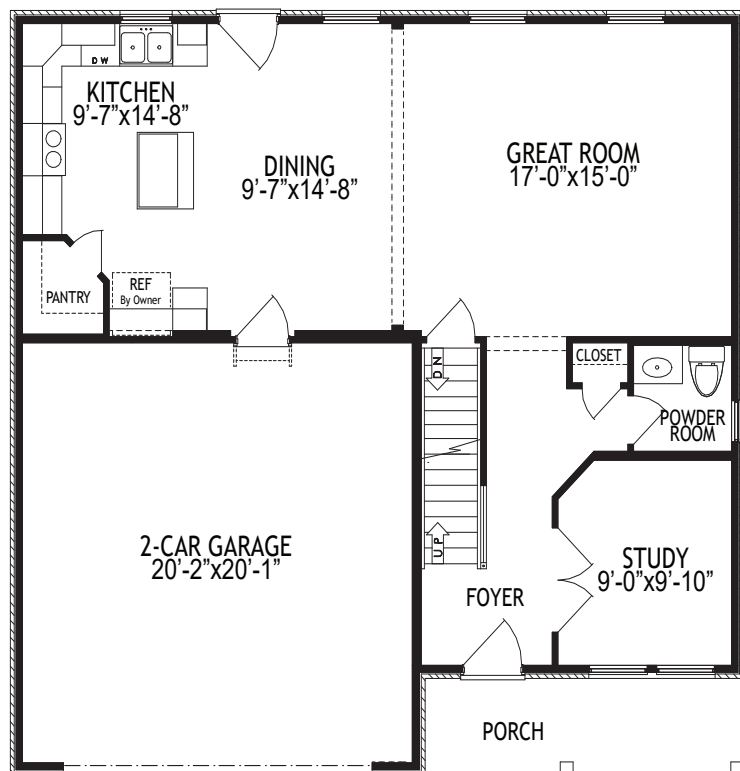
Home Details

- 4 Beds / 2.5 Baths
- 1st Floor 881 SF
- 2nd Floor 1,235 SF
- Lower Level Unfinished
- Total square feet 2,116 SF
- HERS score 49

1st Floor

Features

- Open Kitchen, Dining & Great Room
- 9-Foot Ceilings
- Walk-in Pantry
- Study with French Doors
- Deck with Steps
- 2-Car Garage





The Lancaster

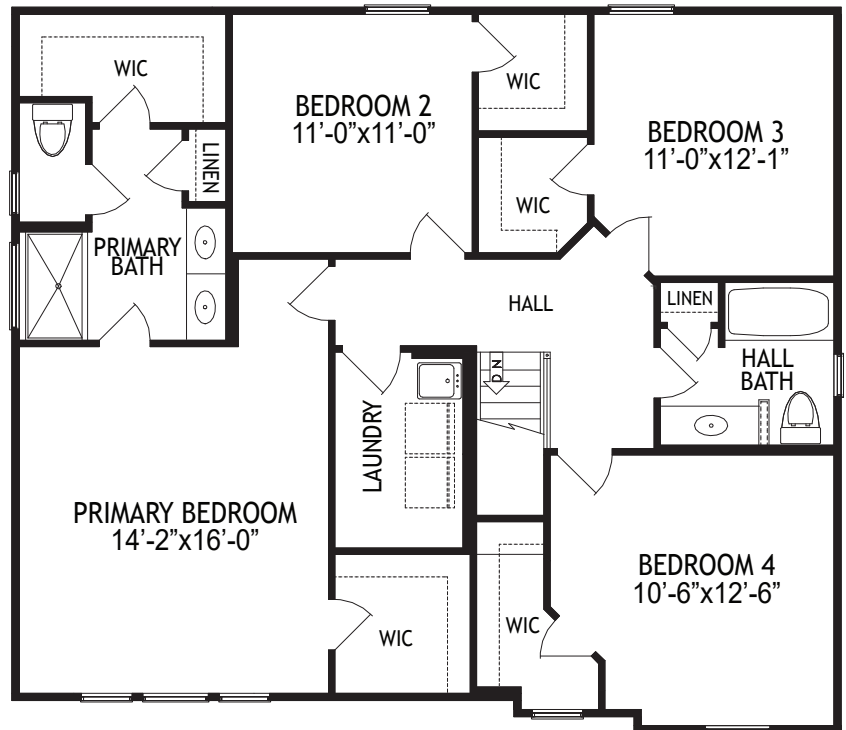
at Ballyshannon

6809 Cloverfield Way • Union, KY
2,116 SF • Home Site BS172

2nd Floor

Features

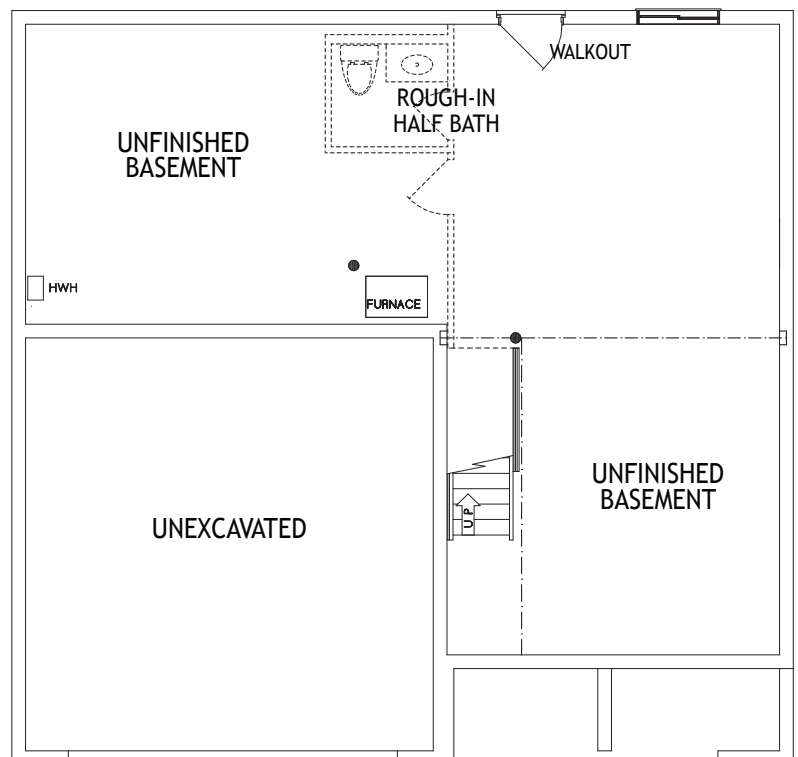
- Primary Bedroom with Two Walk-In Closets
- Primary Bath with Tile Shower & Dual Vanity
- Three Secondary Beds with Walk-In Closets
- Second Floor Laundry



Lower Level

Features

- Unfinished Basement
- Rough-in For Half Bath
- Walkout to Concrete Patio
- High Efficiency Gas Furnace with Electric A/C
- Gas Tankless Water Heater





The Lancaster

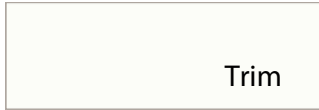
at Ballyshannon

6809 Cloverfield Way • Union, KY
Home Site BS172

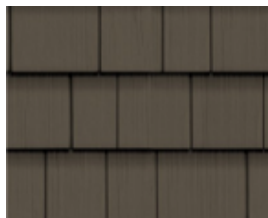
Home Selections



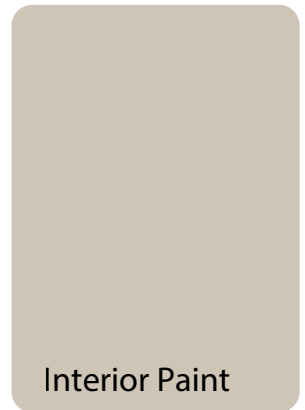
EXTERIOR



Trim



Carpet



Interior Paint

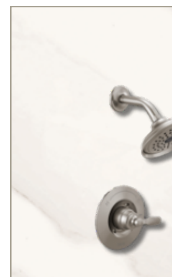
Vinyl Floors

KITCHEN

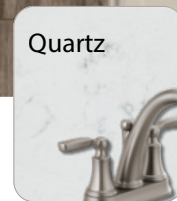


Granite

BATHS



Shower Wall Tile



Quartz

