



The Avalon

at North Pointe

1537 Autumn Ridge Drive • Hebron, KY
2,783 SF • Home Site NP576

\$541,000



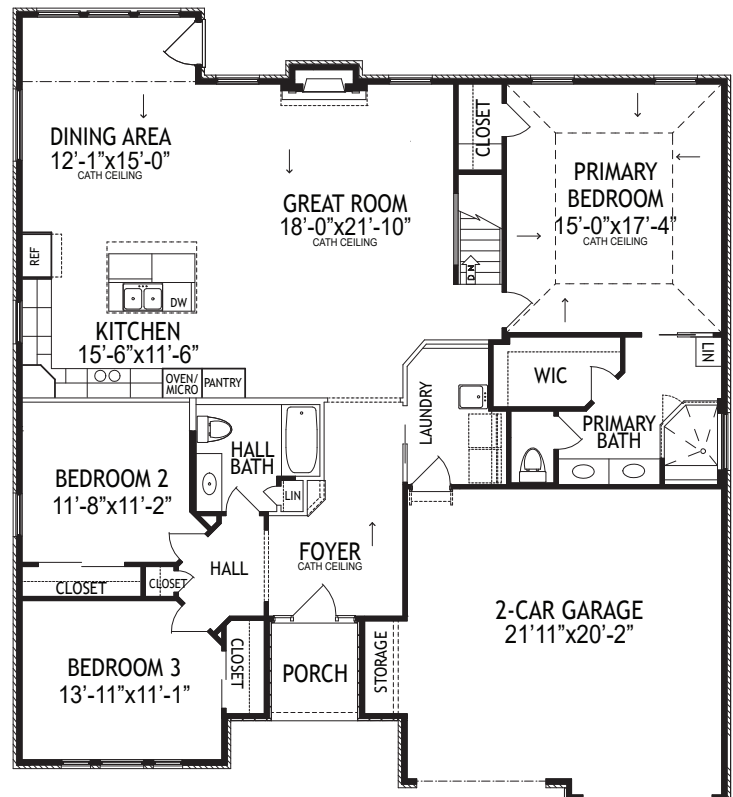
Home Details

- 3 Beds / 2.5 Baths
- 1st Floor 1,931 SF
- Lower Level 852 SF
- Total square feet 2,783 SF
- HERS score 49

1st Floor

Features

- Open Kitchen, Dining & Great Room
- Cathedral Ceiling & Electric Fireplace
- Primary Bedroom with Tray Ceiling
- Two Walk-in Closets
- Primary Bath with Tile Shower
- Covered Deck with Stairs
- 2-Car Garage with Storage Area



6/25/26

www.arlinghaus.com

Brochure is for illustration purposes only. Plan and pricing subject to change.





The Avalon

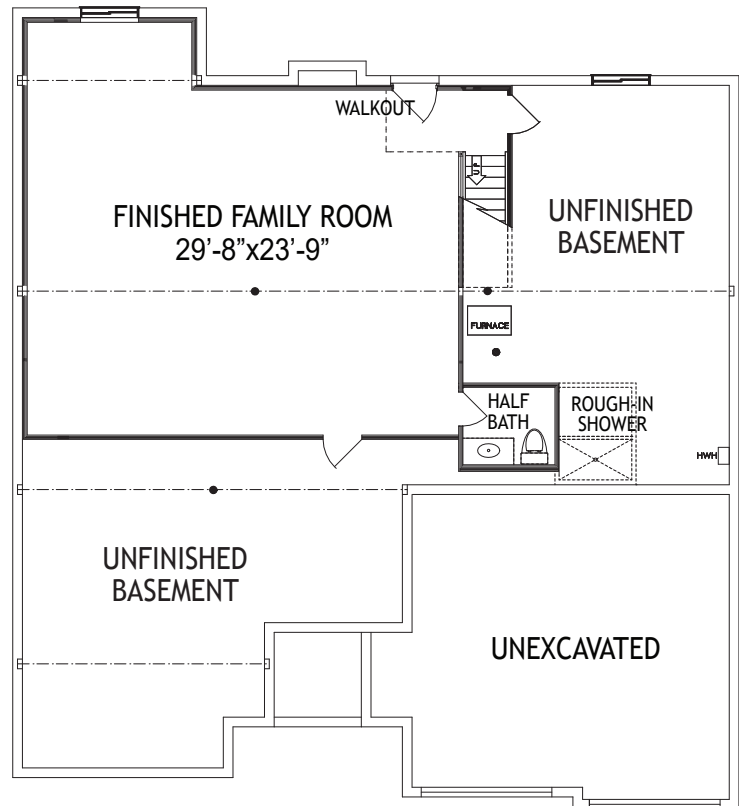
at North Pointe

1537 Autumn Ridge Drive • Hebron, KY
2,783 SF • Home Site NP576

Lower Level

Features

- Finished Family Room & Half Bath
- Rough-in for Future Shower
- Walkout with Concrete Patio
- Tankless Water Heater
- High Efficiency Gas Furnace & Electric A/C



6/25/26

www.arlinghaus.com

Brochure is for illustration purposes only. Plan and pricing subject to change.





The Avalon

at North Pointe

1537 Autumn Ridge Drive • Hebron, KY
Home Site NP576

Home Selections

EXTERIOR



CARPET



Fireplace Tile

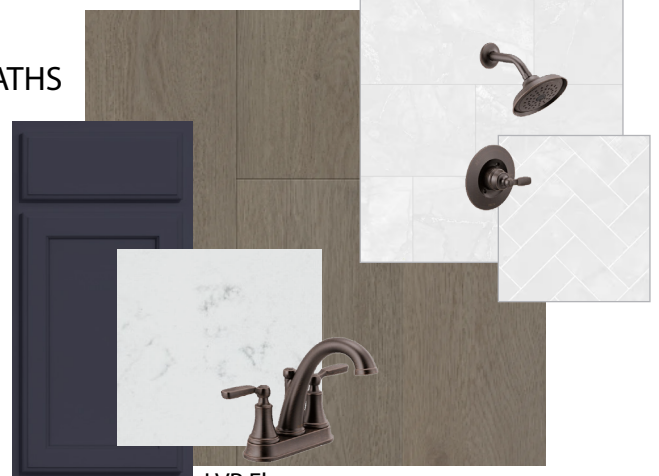
KITCHEN



Granite Countertops
LVP Floors

Tile @ Primary Bath
(Shower Walls & Floor)

BATHS



LVP Floors
Quartz Countertops



6/25/26

www.arlinghaus.com

Brochure is for illustration purposes only. Colors are subject to change & may vary based on your screen.

