



The Avalon

at Westbrook Estates

8908 Cimmaron Trail • Union, Ky 41091
3,081 SF • Home Site WB155

\$621,900



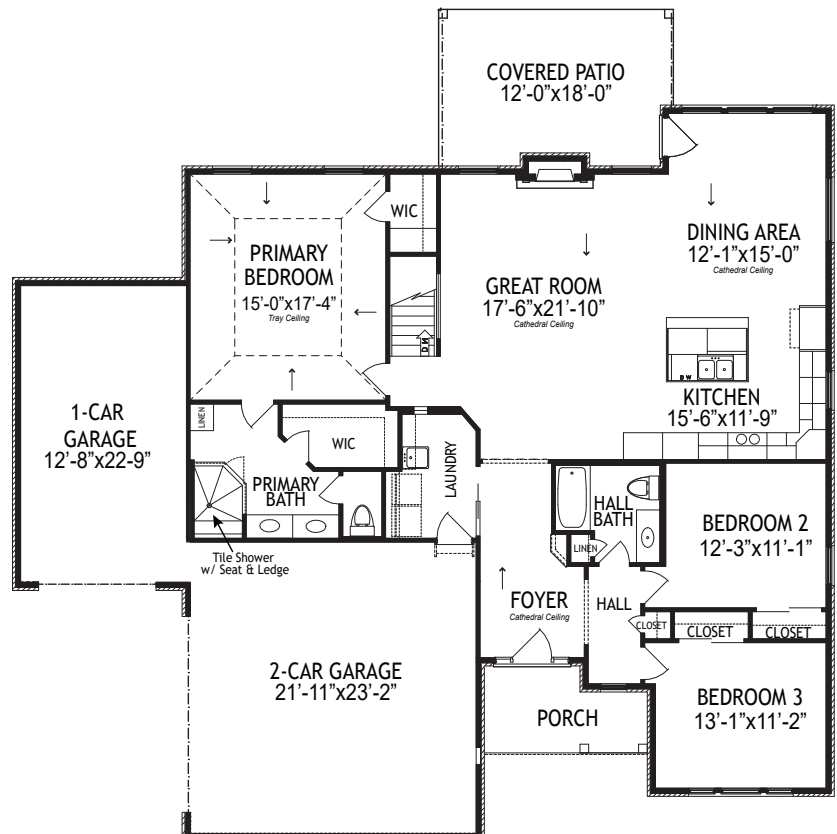
Home Details

- 4 Beds / 3 Baths
- 1st Floor 1,912 SF
- Lower Level 1,169 SF
- Total square feet 3,081 SF
- HERS score 49

1st Floor

Features

- Open Kitchen, Great Room, Dining
- Cathedral Ceilings
- Quartz Kitchen Counters with Tile Backsplash
- Large Primary Bedroom with Tray Ceiling & Walk-in Closet
- Primary Bedroom with Walk-in Closet, Tile Shower & Double Vanity
- Covered Outdoor Patio
- 3-Car Garage



04/14/26

www.arlinghaus.com

Brochure is for illustration purposes only. Plan and pricing subject to change.





The Avalon

at Westbrook Estates

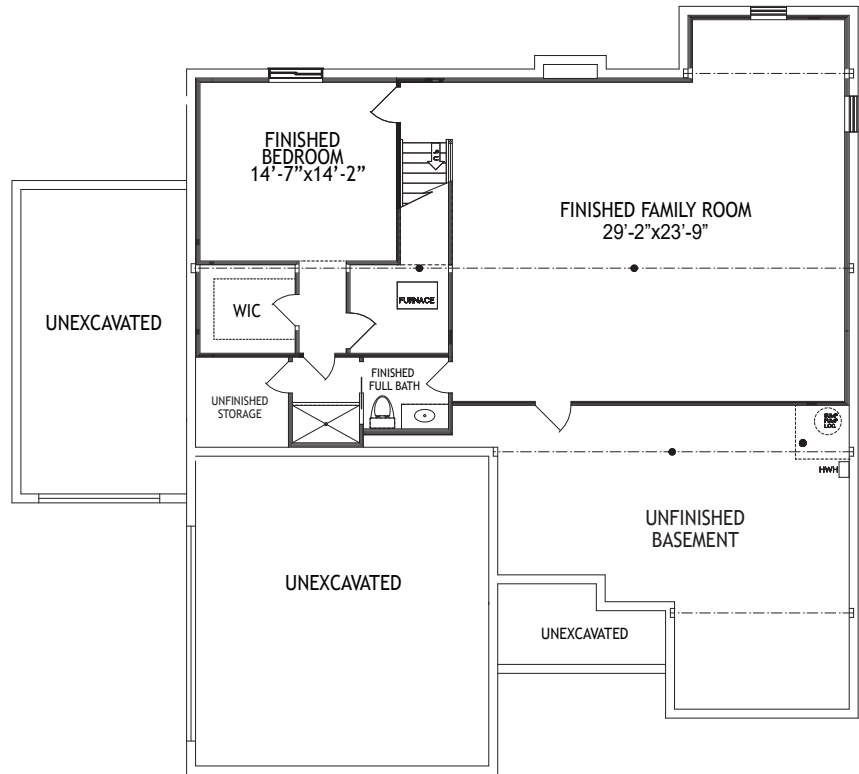
8908 Cimmaron Trail • Union, Ky 41091

3,081 SF • Home Site WB155

Lower Level

Features

- Finished Family Room & Bedroom with Walk-in Closet
- Finished Full Bath
- High Efficiency Gas Furnace & Electric A/C
- High Efficiency Tankless Water Heater



04/14/26

www.arlinghaus.com

Brochure is for illustration purposes only. Plan and pricing subject to change.





The Avalon

at Westbrook Estates

8908 Cimmaron Trail • Union, Ky 41091

Home Site WB155

Home Selections

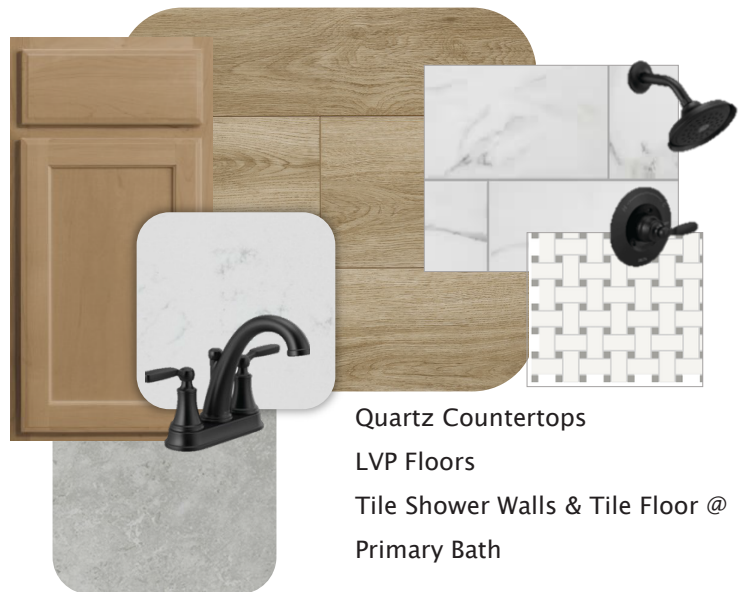
EXTERIOR



WALLS & CARPET



BATHS



Quartz Countertops

LVP Floors

Tile Shower Walls & Tile Floor @
Primary Bath

LL Bath Tile

KITCHEN



Quartz Countertops

LVP Floors

Tile Backsplash

www.arlinghaus.com

Brochure is for illustration purposes only. Colors are subject to change & may vary based on your screen.



04/14/26