



# The Rosewood

at Westbrook Estates

9020 Countrybrook Pass • Union, Ky 41091

2,770 SF • Home Site WB151

**\$639,900**



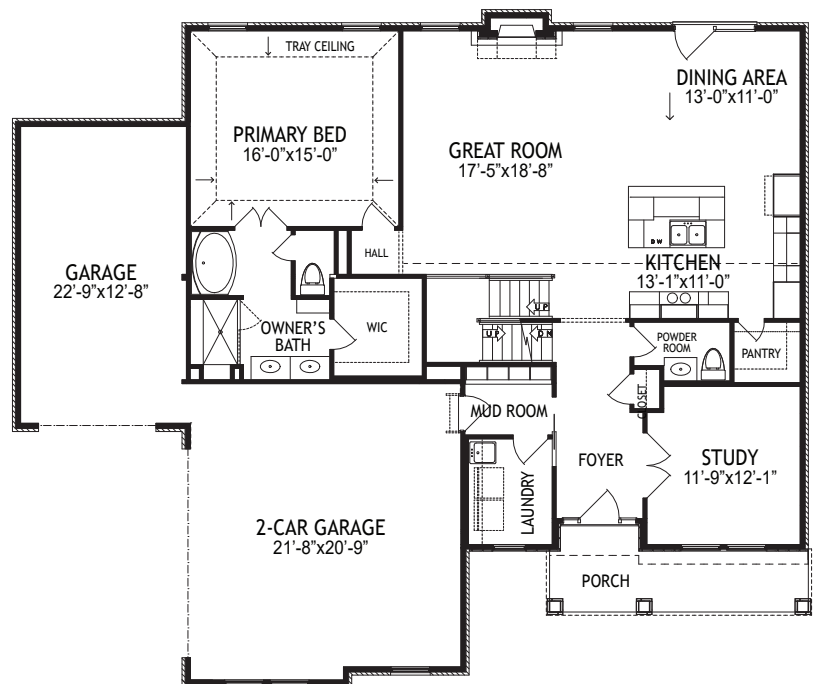
## Home Details

- 4 Beds / 2.5 Baths
- 1st Floor 1,647 SF
- 2nd Floor 1,123 SF
- Lower Level Unfinished
- Total square feet 2,770 SF
- HERS score 49

## 1st Floor

### Features

- Open Kitchen, Dining & Great Room w/ Cathedral Ceiling & Electric Fireplace
- Upgraded Kitchen w/ Stainless Appliances, Granite Counters & Tile Backsplash
- Large Primary Bedroom w/ Tray Ceiling & Large Walk-in Closet
- Primary Bath w/ Tile Shower & Garden Tub
- Walkout First Floor w/ Covered Patio
- 3-Car Garage



4/30/25

[www.arlinghaus.com](http://www.arlinghaus.com)

Brochure is for illustration purposes only. Plan and pricing subject to change.





# The Rosewood

at Westbrook Estates

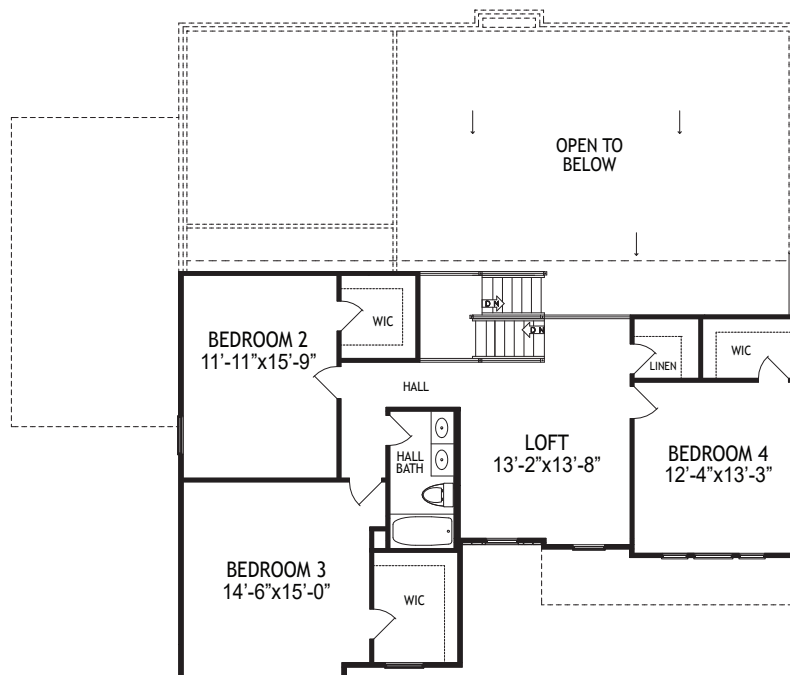
9020 Countrybrook Pass • Union, Ky 41091

2,770 SF • Home Site WB151

## 2nd Floor

### Features

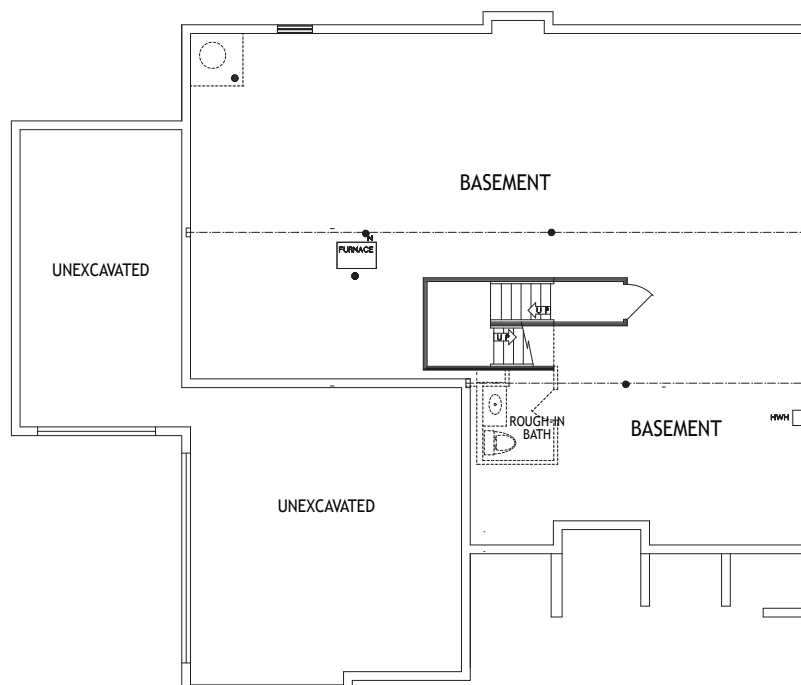
- Hall Bath w/ Double Bowl Vanities
- 3 Large Bedrooms w/ Walk-in Closets



## Lower Level

### Features

- Unfinished Basement
- Rough-in for Half Bath
- Trane® S9V2 Gas Furnace w/ XR 12 A/C
- Rinnai® Tankless Water Heater



4/30/25

[www.arlinghaus.com](http://www.arlinghaus.com)

Brochure is for illustration purposes only. Plan and pricing subject to change.





# The Rosewood

at Westbrook Estates

9020 Countrybrook Pass • Union, Ky 41091

2,770 SF • Home Site WB151

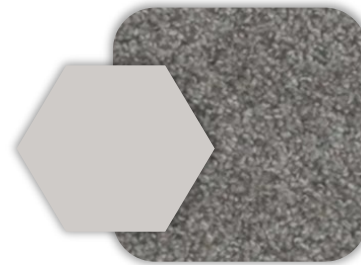
## Home Selections

### EXTERIOR



Front Door

### WALLS & CARPET



Interior Doors

### KITCHEN



Quartz Countertops  
LVP Floors  
Backsplash

### BATHS



Quartz Countertops  
LVP Floors  
Tile Shower Walls @ Primary Bath



4/30/25

[www.arlinghaus.com](http://www.arlinghaus.com)

Brochure is for illustration purposes only. Plan and pricing subject to change.

