



# The Jefferson

at North Pointe

**\$437,900**

1843 Emory Court • Hebron, Ky 41048

2,601 SF • Home Site NP201

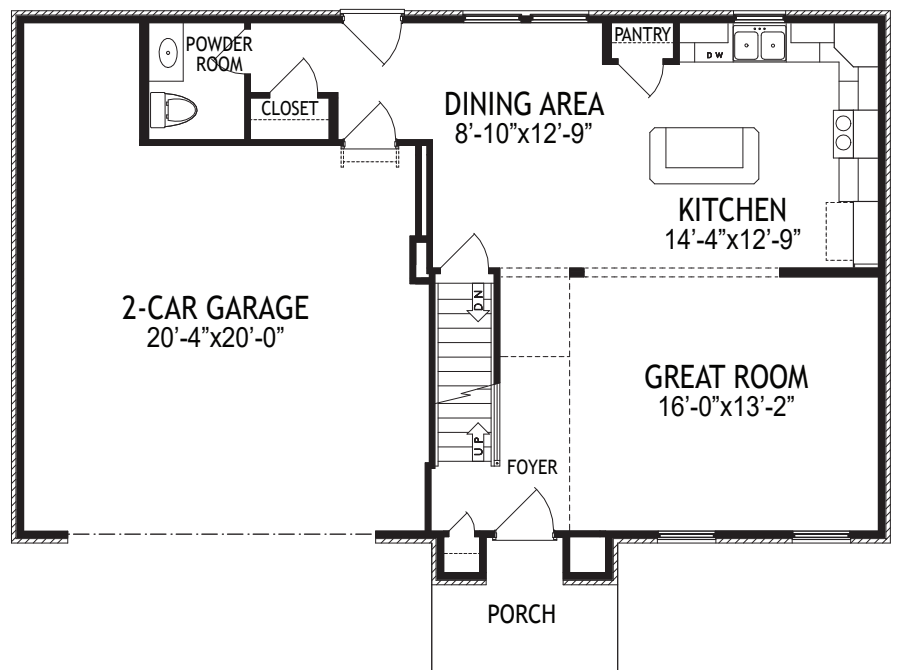


## Size

- 1st Floor 784 SF
- 2nd Floor 1,283 SF
- Lower Level 534 SF
- Total square feet 2,601 SF
- HERS score 49

## 1st Floor Features

- Open Foyer
- Open Kitchen/Great Room
- Granite Counters & Stainless Appliances
- Deck with Stairs
- 2-car garage



[www.arlinghaus.com](http://www.arlinghaus.com)

Brochure is for illustration purposes only. Plan and pricing subject to change.



3/27/2025



# The Jefferson

at North Pointe

Page 2

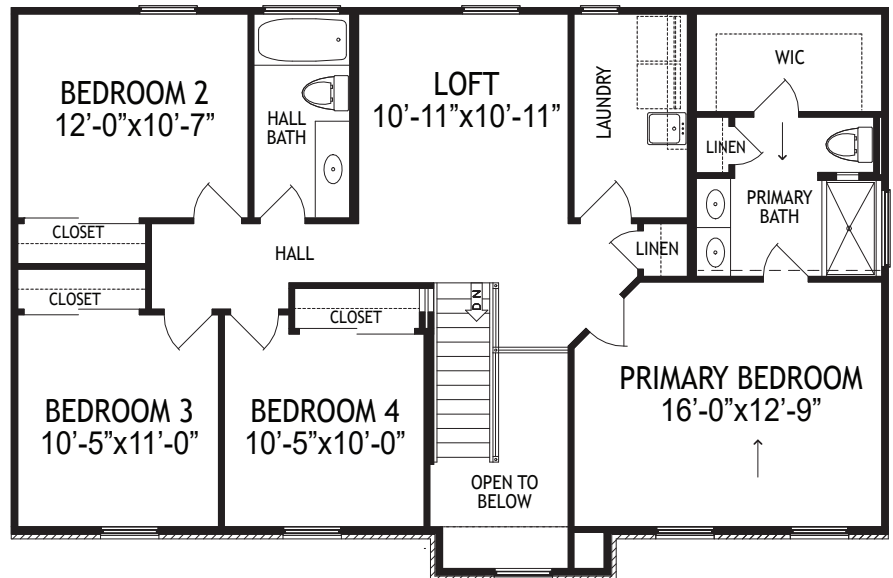
1843 Emory Court • Hebron, Ky 41048

2,601 SF • Home Site NP201

## 2nd Floor

### Features

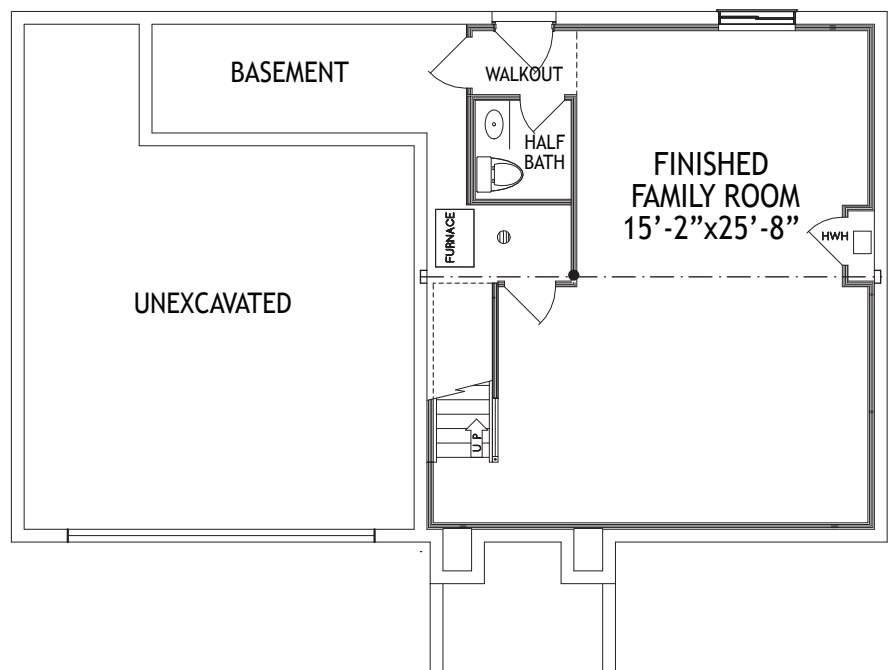
- Large Primary Bedroom with Cathedral Ceiling
- Primary Bath with Tile Shower
- Second floor Loft
- Second floor Laundry



## Lower Level

### Features

- Finished Family Room & Half Bath
- Walk Out Basement
- Glass Door to Patio
- Rinnai® Tankless Water Heater
- Trane® S9V2 Gas Furnace with XR 14 A/C



[www.arlinghaus.com](http://www.arlinghaus.com)

Brochure is for illustration purposes only. Plan and pricing subject to change.



3/27/2025