



The Jefferson

at Treetops Estates

\$411,900

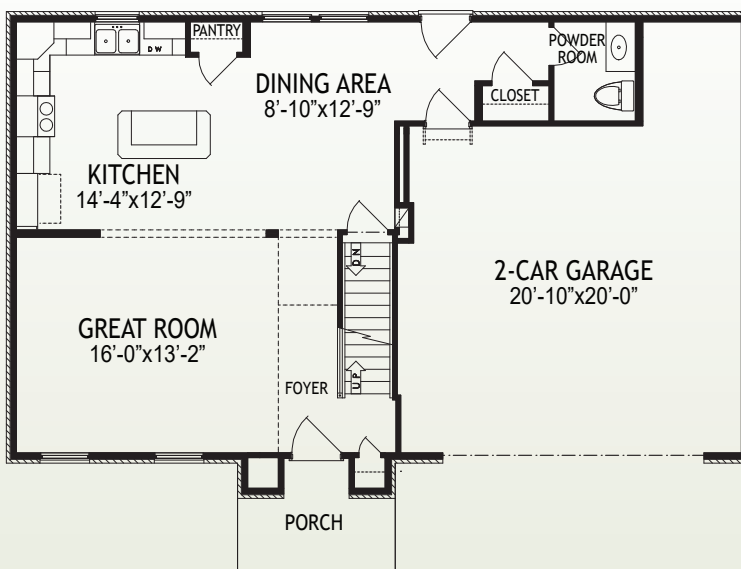
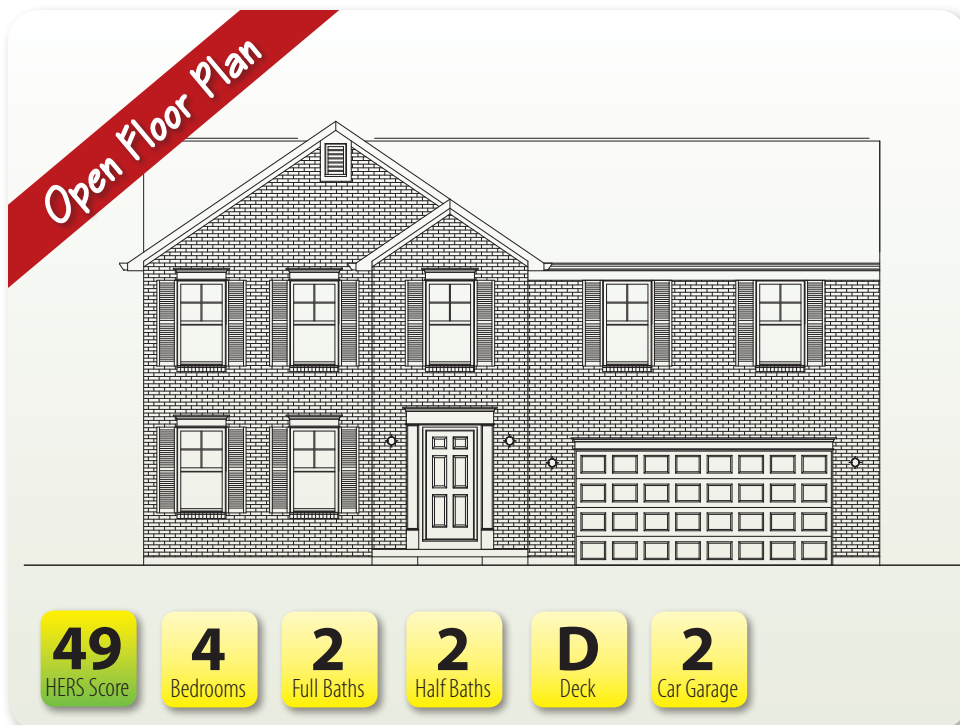
2398 Wernz Drive • Hebron, Ky 41048
2,601 SF • Home Site TE298

Features

- Open Kitchen/Great Room
- Stainless Appliances
- Granite Counters
- Covered Deck with Stairs
- Large Owner's Suite with Cathedral Ceiling
- Tile Shower in Owner's Bath
- Second Floor Loft
- Finished Lower Level w/Walkout & Half Bath
- Electric Furnace & Hot Water Heater

Size

- | | |
|------------------------|----------|
| • 1st Floor | 784 SF |
| • 2nd Floor | 1,283 SF |
| • Finished Lower Level | 534 SF |



1st Floor

www.arlinghaus.com

Brochure is for illustration purposes only. Plan and pricing subject to change.



10/26/23



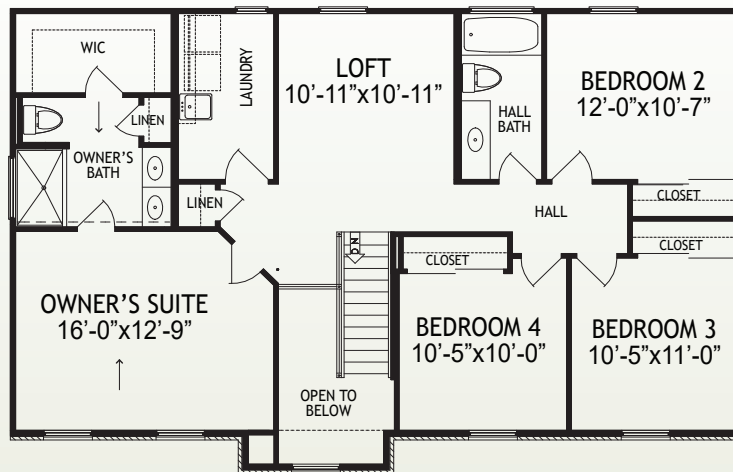
The Jefferson

at Treetops Estates

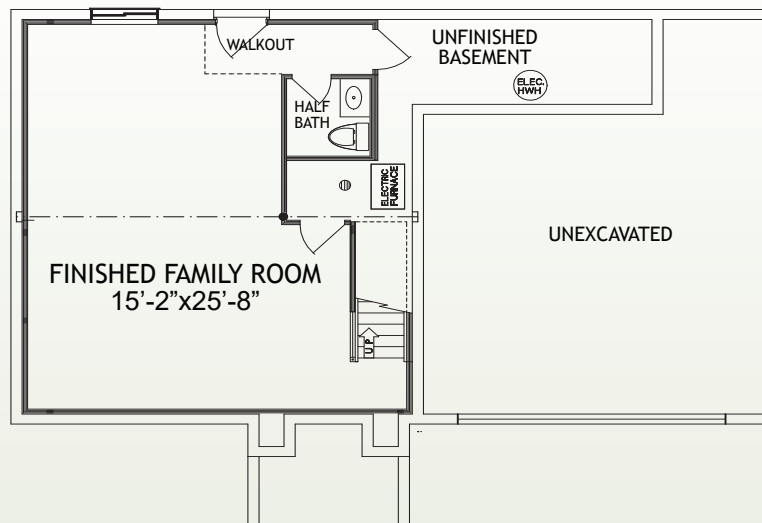
Page 2

2398 Wernz Drive • Hebron, Ky 41048

2,601 SF • Home Site TE298



2nd Floor



Lower Level

www.arlinghaus.com

Brochure is for illustration purposes only. Plan and pricing subject to change.



10/26/23