



The Morgan

at North Pointe

\$449,900

1845 Patton Drive • Hebron, Ky 41048

2,942 SF • Home Site NP506

Features

- 9' First Floor Ceilings
- Open Kitchen/Great Room
- LVP Flooring at Foyer, Powder Room, Kitchen, & Dining Area
- First Floor Study
- Stainless Appliances/ Granite Counters
- Deck with Stairs
- Large Owner's Suite w/Tile Shower
- Finished Lower Level w/Walkout
- Rinnai® Tankless Water Heater
- Trane® S9V2 Gas Furnace with XR 14 A/C

Size

- | | |
|------------------------|----------|
| • 1st Floor | 1,020 SF |
| • 2nd Floor | 1,327 SF |
| • Finished Lower Level | 595 SF |

Open Floor Plan



49
HERS Score

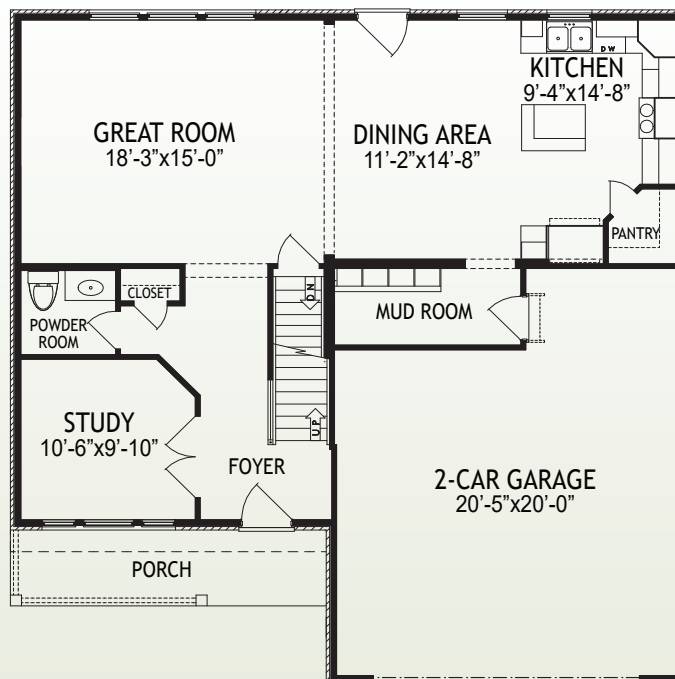
4
Bedrooms

2
Full Baths

2
Half Baths

D
Deck

2
Car Garage



1st Floor

www.arlinghaus.com

Brochure is for illustration purposes only. Plan and pricing subject to change.



10/10/23

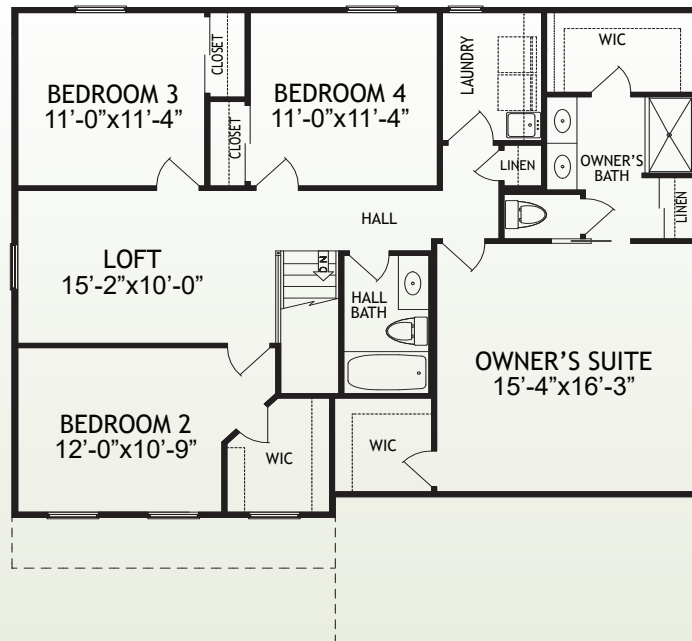


The Morgan

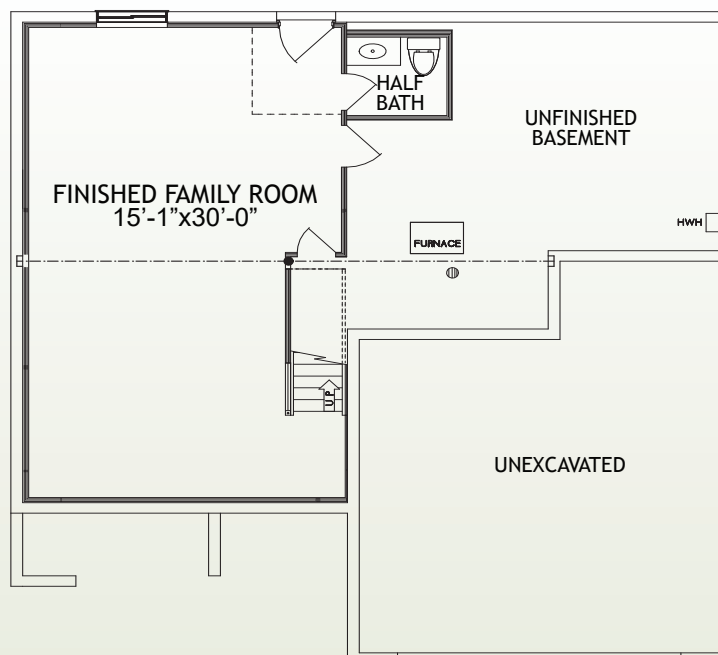
at North Pointe

Page 2

1845 Patton Drive • Hebron, Ky 41048
2,942 SF • Home Site NP506



2nd Floor



Lower Level

www.arlinghaus.com

Brochure is for illustration purposes only. Plan and pricing subject to change.



10/10/23