



The Leighann

at Treetops Estates

\$433,900

2415 Wernz Drive • Hebron, Ky 41048

2,881 SF • Home Site TE288

Features

- Open Kitchen/Great Room
- Granite Kitchen Counters
- Stainless Appliances
- First Floor Study
- Second Floor Loft
- Large Owner's Suite w/ Tile Shower
- Finished Lower Level w/Walkout
- Deck with Stairs
- Rinnai® Tankless Water Heater
- Trane® S9V2 Gas Furnace with XR 14 A/C

Size

- | | |
|------------------------|----------|
| • 1st Floor | 960 SF |
| • 2nd Floor | 1,326 SF |
| • Finished Lower Level | 595 SF |

Open Floor Plan



49
HERS Score

4
Bedrooms

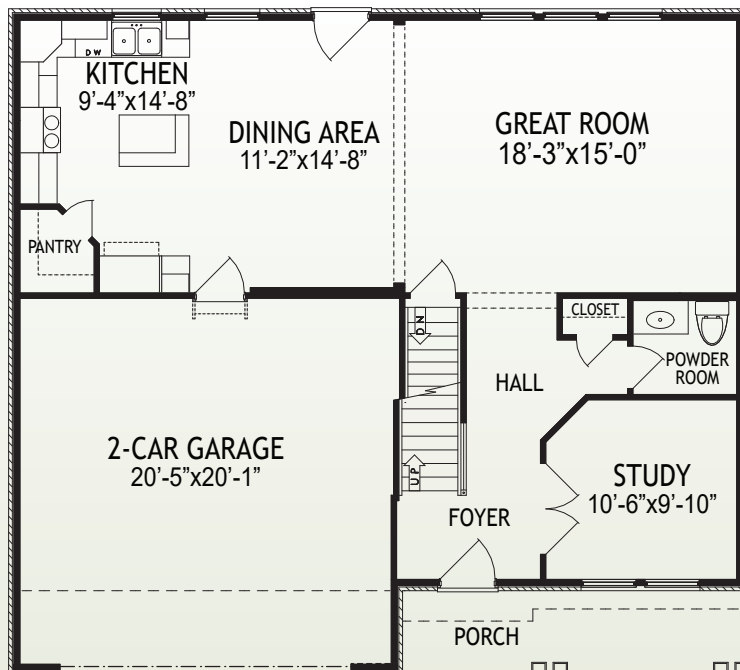
2
Full Baths

2
Half Baths

D
Deck

2
Car Garage

1st Floor



www.arlinghaus.com

Brochure is for illustration purposes only. Plan and pricing subject to change.



09/26/23



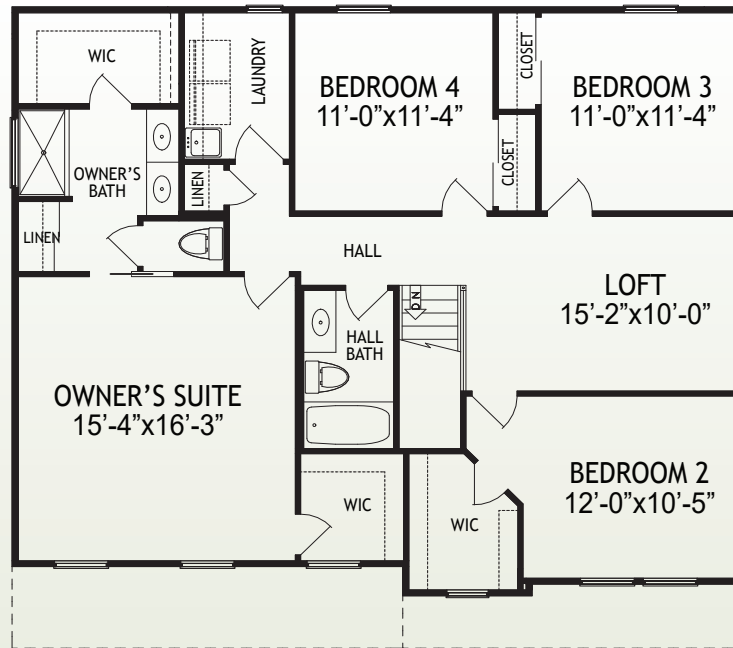
The Leighann

at Treetops Estates

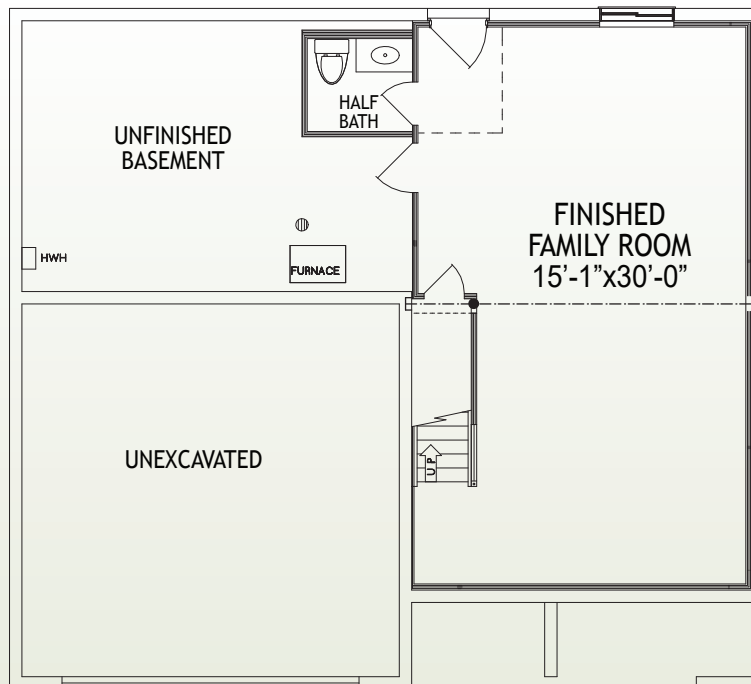
Page 2

2415 Wernz Drive • Hebron, Ky 41048

2,881 SF • Home Site TE288



2nd Floor



Lower Level

www.arlinghaus.com

Brochure is for illustration purposes only. Plan and pricing subject to change.



09/26/23