



The Jefferson

at Treetops Estates

\$407,900

2410 Wernz Drive • Hebron, Ky 41048
2,601 SF • Home Site TE295

Features

- Open Kitchen/Great Room
- Stainless Appliances/ Granite Counters
- LVP Flooring Foyer, Kitchen, Dining Area, & Powder Room
- Deck with Stairs
- Large Owner's Suite with Cathedral Ceiling
- Tile Shower in Owner's Bath
- Second Floor Loft
- Finished Lower Level w/walkout & 1/2 Bath
- Rinnai Tankless Water Heater
- Trane® S9V2 Gas Furnace with XR14 A/C

Size

- | | |
|------------------------|----------|
| • 1st Floor | 784 SF |
| • 2nd Floor | 1,283 SF |
| • Finished Lower Level | 534 SF |

Open Floor Plan



49
HERS Score

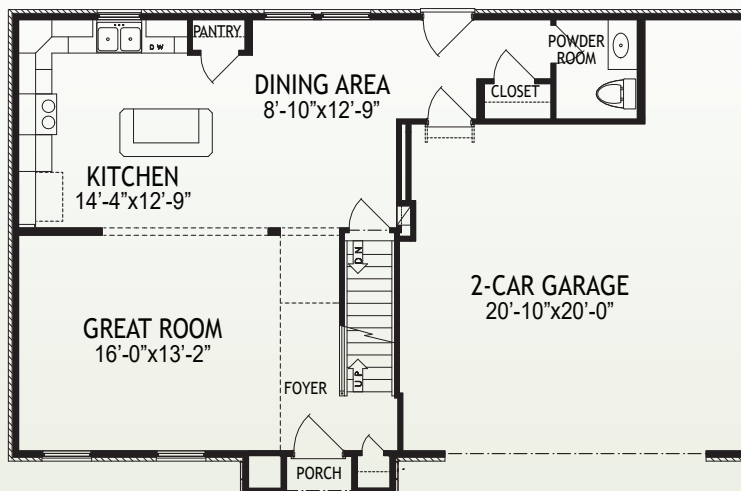
4
Bedrooms

2
Full Baths

2
Half Baths

D
Deck

2
Car Garage



1st Floor

www.arlinghaus.com

Brochure is for illustration purposes only. Plan and pricing subject to change.



07/13/23



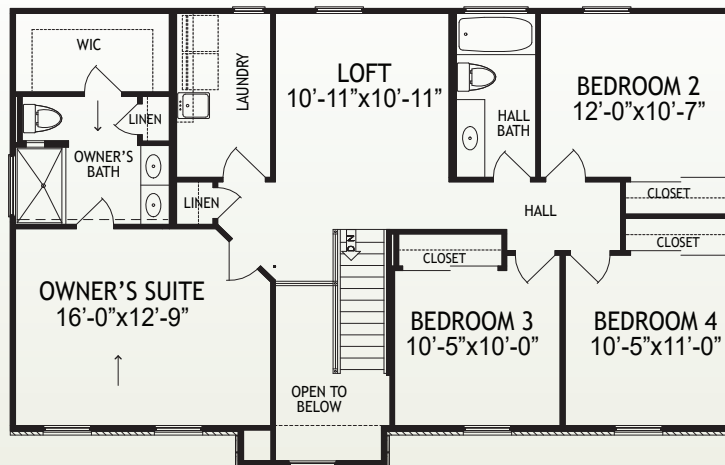
The Jefferson

at Treetops Estates

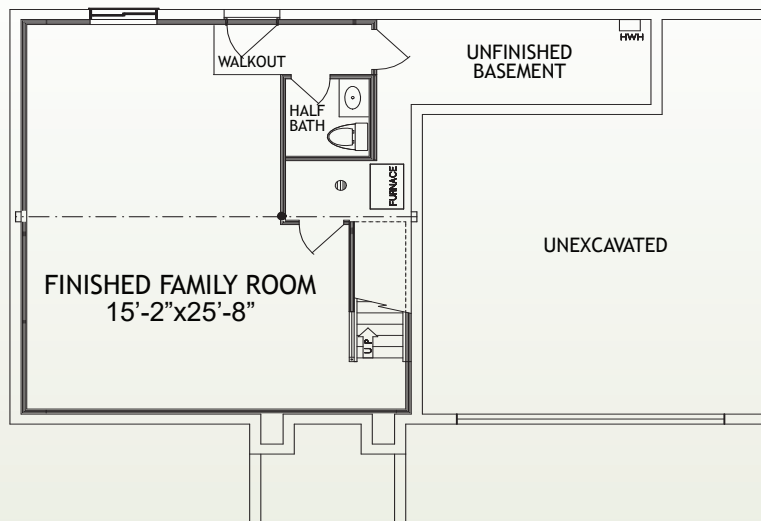
Page 2

2410 Wernz Drive • Hebron, Ky 41048

2,601 SF • Home Site TE295



2nd Floor



Lower Level

www.arlinghaus.com

Brochure is for illustration purposes only. Plan and pricing subject to change.



07/13/23