



The Avalon

at North Pointe



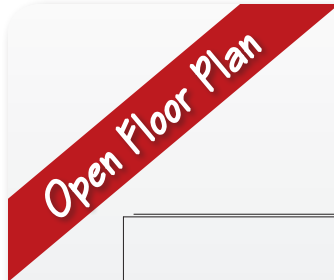
1829 Patton Drive • Hebron, Ky 41048
2,661 SF • Home Site NP510

Features

- Open Kitchen/Great Room
- LVP Flooring Foyer, Hall, Great Room, Kitchen & Dining Area
- Stainless Appliances/Granite Counters
- Covered Deck
- Large Owner's Suite
- Tray Ceiling in Owner's Suite
- Tile Shower in Owner's Bath
- Finished Basement w/Walkout
- Trane® S9V2 Gas Furnace with XR14 A/C

Size

- 1st Floor 1,881 SF
- Lower Level 780 SF



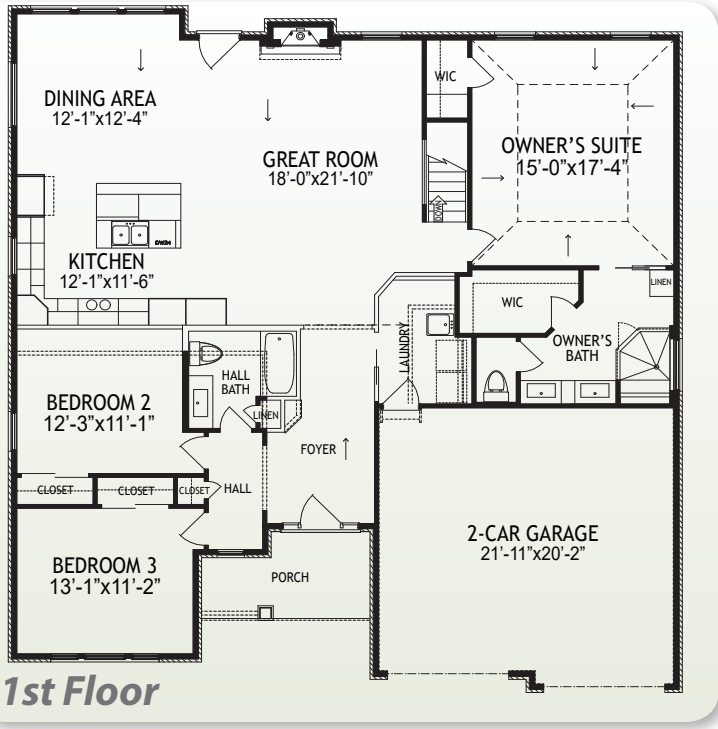
49
HERS Score

3
Bedrooms

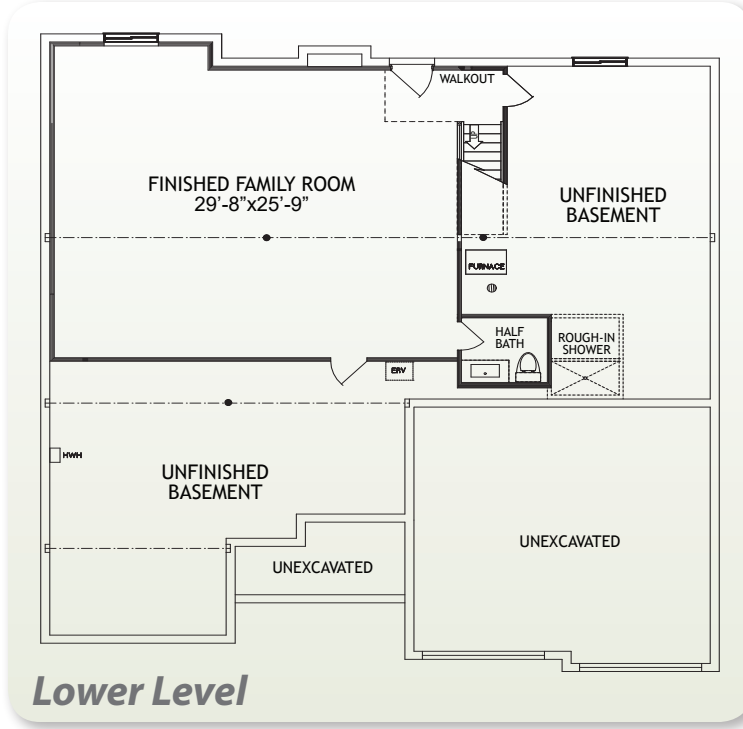
2½
Baths

D
Deck

2
Car Garage



1st Floor



Lower Level

www.arlinghaus.com

Brochure is for illustration purposes only. Plan and pricing subject to change.

