



The Jefferson

at Ballyshannon

\$389,900

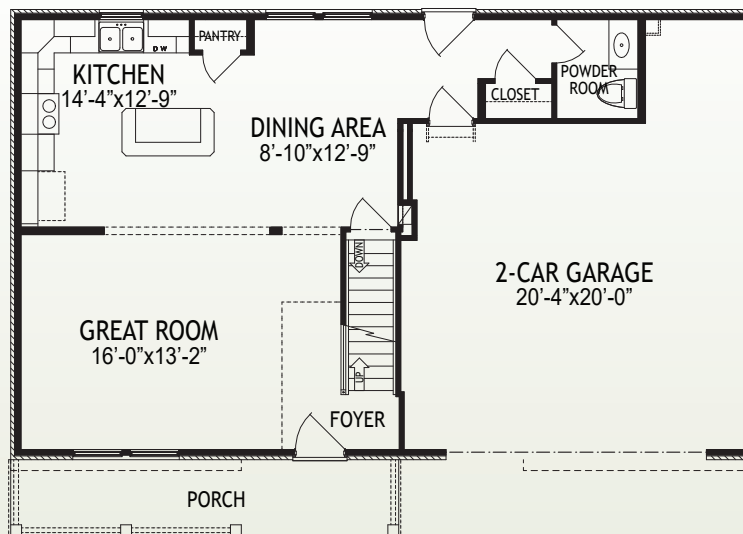
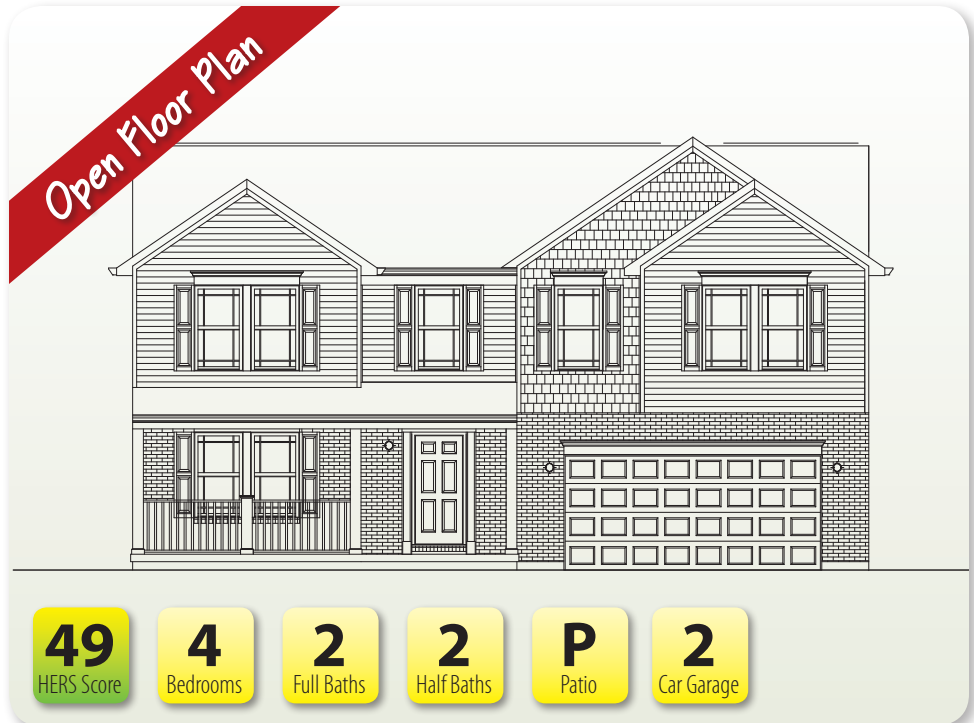
3420 Brogue Place • Union, Ky 41091
2,592 SF • Home Site BS266

Features

- Open Kitchen/Great Room
- LVP Flooring in Foyer, Great Room, Kitchen, Dining Area, & Powder Room
- Black Stainless Appliances/ Granite Counters
- Large Owner's Suite
- Second Floor Loft
- Finished Lower Level with 1/2 Bath
- No Walkout at Lower Level
- Rinnai® Tankless Water Heater
- Trane® S9V2 Gas Furnace with XR 14 A/C
- ENERGY STAR® Home

Size

- | | |
|------------------------|----------|
| • 1st Floor | 775 SF |
| • 2nd Floor | 1,283 SF |
| • Finished Lower Level | 534 SF |



1st Floor

www.arlinghaus.com

Brochure is for illustration purposes only. Plan and pricing subject to change.



11/30/22

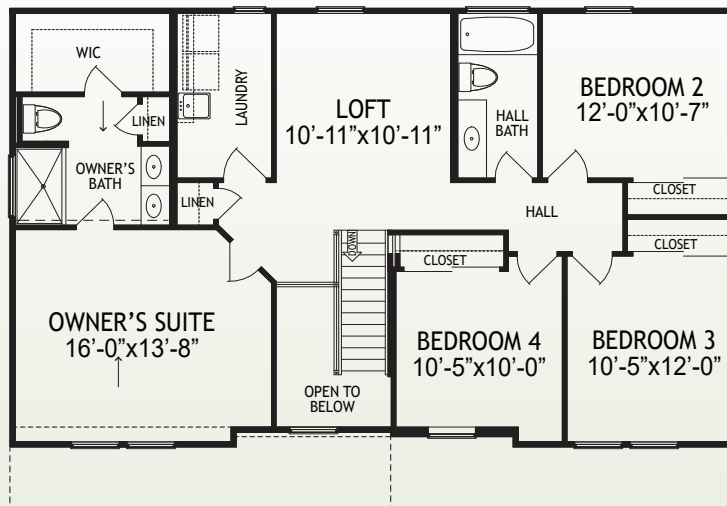


The Jefferson

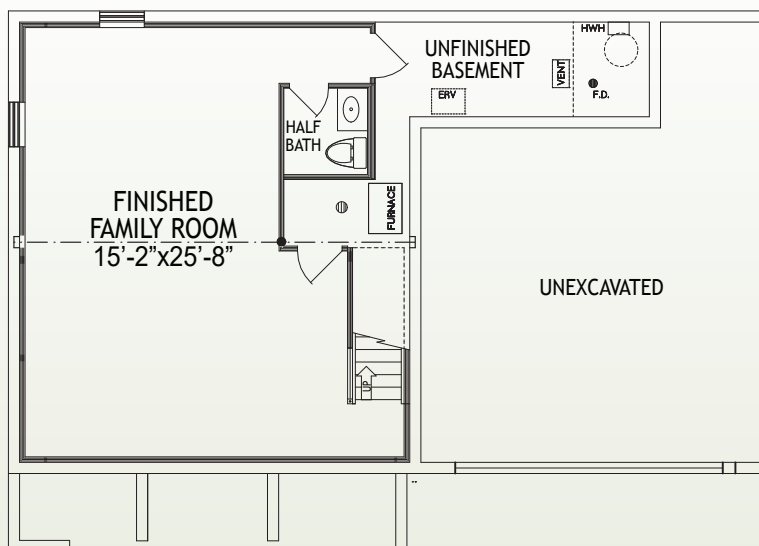
at Ballyshannon

Page 2

3420 Brougue Place • Union, Ky 41091
2,592 SF • Home Site BS266



2nd Floor



Lower Level

www.arlinghaus.com

Brochure is for illustration purposes only. Plan and pricing subject to change.



11/30/22