



The Morgan

at Treetops Estates

\$411,900

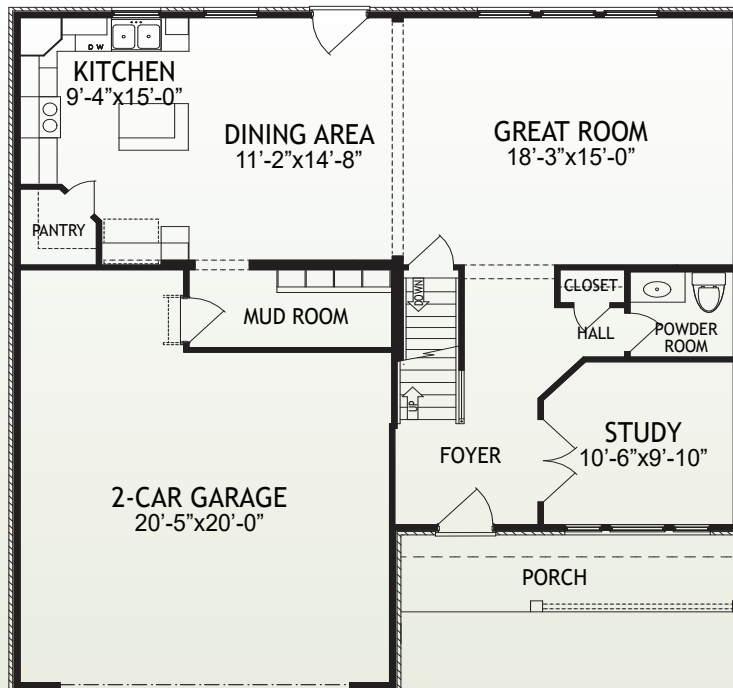
2443 Wernz Drive • Hebron, Ky 41048
2,942 SF • Home Site TE276

Features

- Open Kitchen/Great Room
- Stainless Appliances/ Granite Counters
- First Floor Study
- Covered Patio
- Large Owner's Suite
- Second Floor Loft
- Finished Lower Level with 1/2 Bath
- Rinnai® Tankless Water Heater
- Trane® S9V2 Gas Furnace with XR 14 A/C
- ENERGY STAR® Home

Size

- | | |
|------------------------|----------|
| • 1st Floor | 1,020 SF |
| • 2nd Floor | 1,327 SF |
| • Finished Lower Level | 595 SF |



1st Floor

www.arlinghaus.com

Brochure is for illustration purposes only. Plan and pricing subject to change.



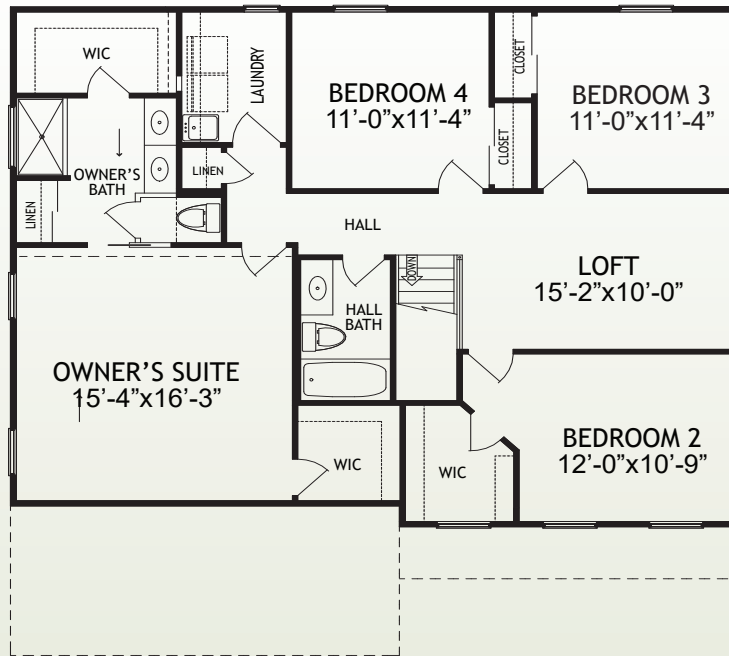


The Morgan

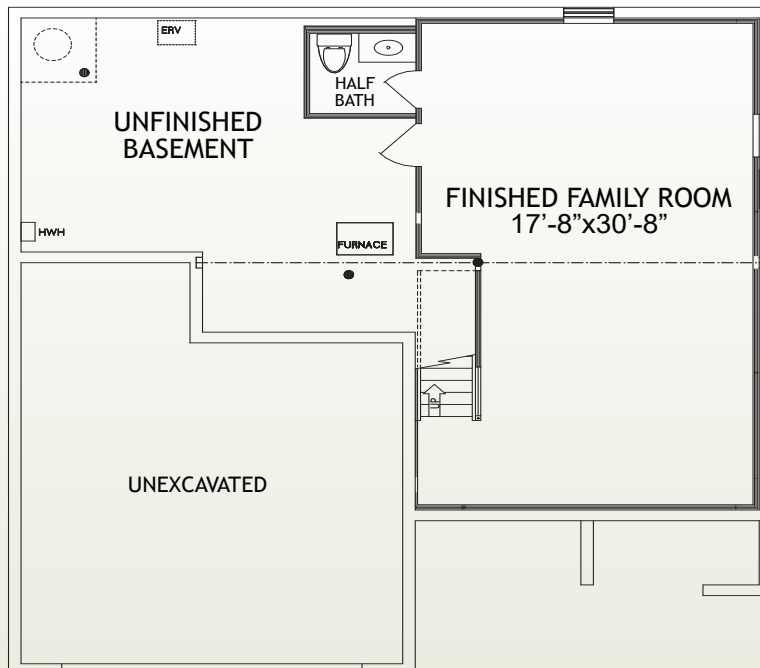
at Treetops Estates

Page 2

2443 Wernz Drive • Hebron, Ky 41048
2,942 SF • Home Site TE276



2nd Floor



Lower Level

www.arlinghaus.com

Brochure is for illustration purposes only. Plan and pricing subject to change.



10/20/22