



The Jefferson

at Treetops Estates

\$384,900

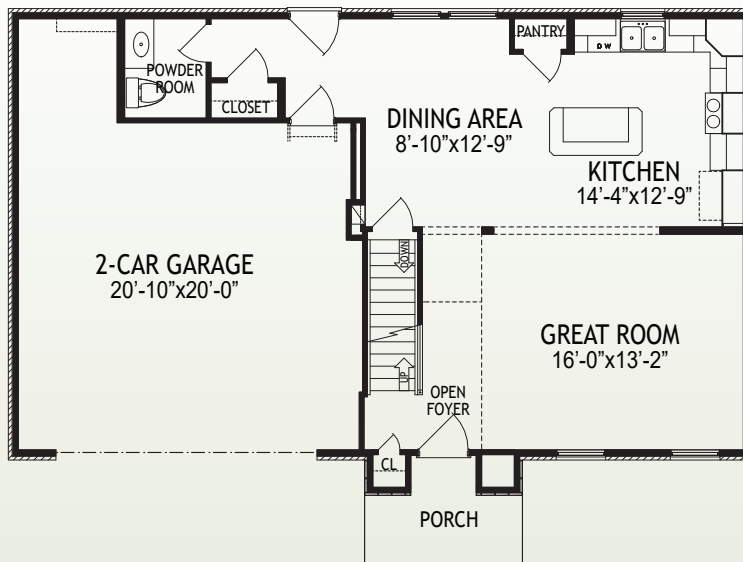
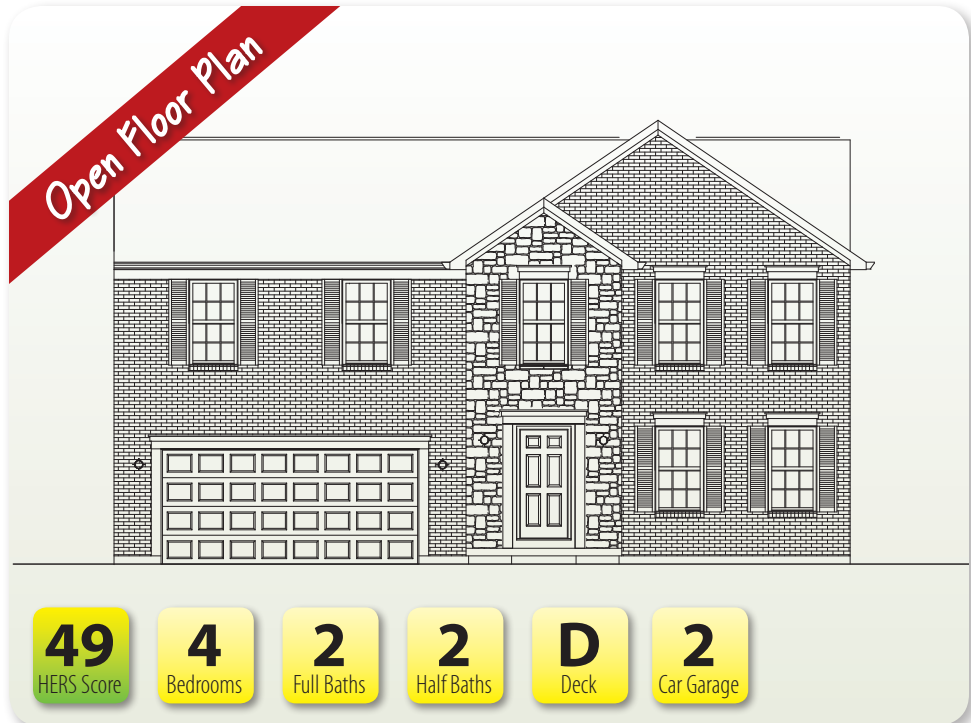
1727 Elmburn Lane • Hebron, Ky 41048
2,592 SF • Home Site TE237

Features

- Open Kitchen/Great Room
- LVP Flooring in Foyer, Hall, Powder Room, Kitchen, & Dining Area
- Black Stainless Appliances/ Granite Counters
- Large Owner's Suite
- Tile Shower at Owner's Bath
- Second Floor Loft
- Finished Lower Level with 1/2 Bath
- Basement Walkout w/Patio
- Rinnai® Tankless Water Heater
- Trane® S9V2 Gas Furnace with XR 14 A/C

Size

- | | |
|------------------------|----------|
| • 1st Floor | 775 SF |
| • 2nd Floor | 1,283 SF |
| • Finished Lower Level | 534 SF |



1st Floor

www.arlinghaus.com

Brochure is for illustration purposes only. Plan and pricing subject to change.



10/24/22



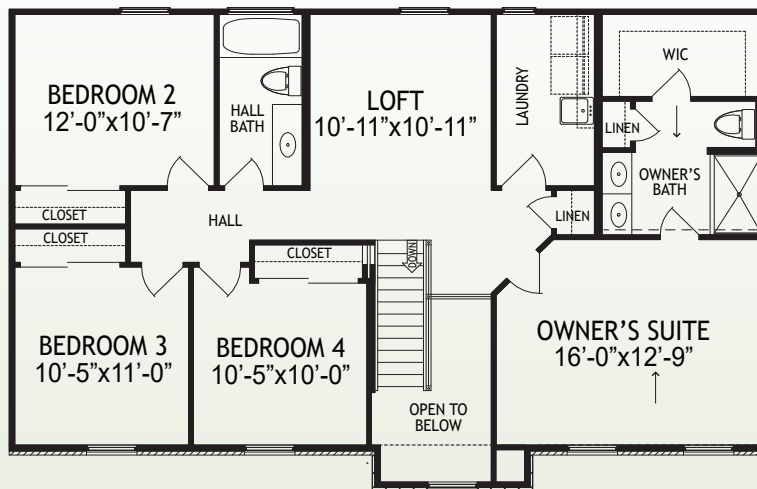
The Jefferson

at Treetops Estates

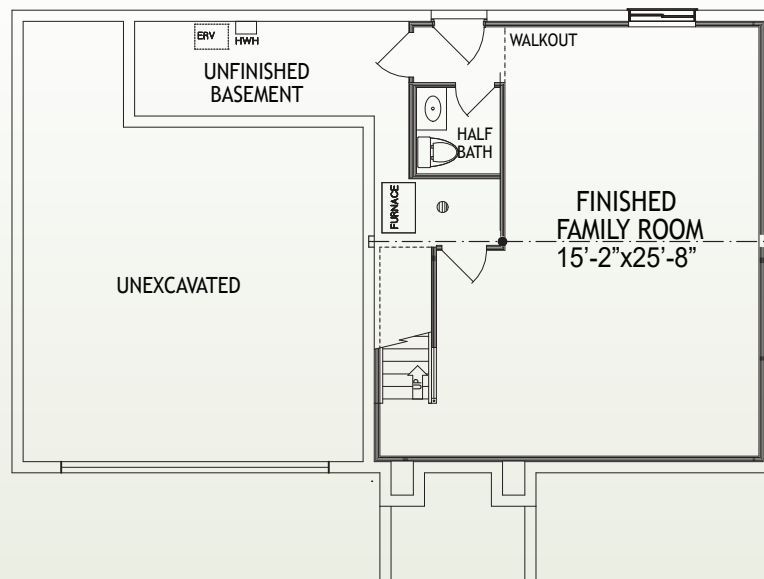
Page 2

1727 Elmburn Lane • Hebron, Ky 41048

2,592 SF • Home Site TE237



2nd Floor



Lower Level

www.arlinghaus.com

Brochure is for illustration purposes only. Plan and pricing subject to change.



10/24/22