



# The Jefferson

at North Pointe

**\$383,900**

1326 Dominion Trail • Hebron, Ky 41048

2,601 SF • Home Site NP428

## Features

- Open Kitchen/Great Room
- LVT Flooring in Foyer, Powder Room, Kitchen, & Dining Area
- Stainless Appliances/ Granite Counters
- Open Foyer
- Second Floor Loft
- Finished Lower Level with 1/2 Bath
- Basement Walkout w/ Patio
- Rinnai® Tankless Water Heater
- Trane® S9V2 Gas Furnace with XR 14 A/C
- ENERGY STAR® Home

## Size

- 1st Floor 784 SF
- 2nd Floor 1,283 SF
- Finished Lower Level 534 SF



**49**  
HERS Score

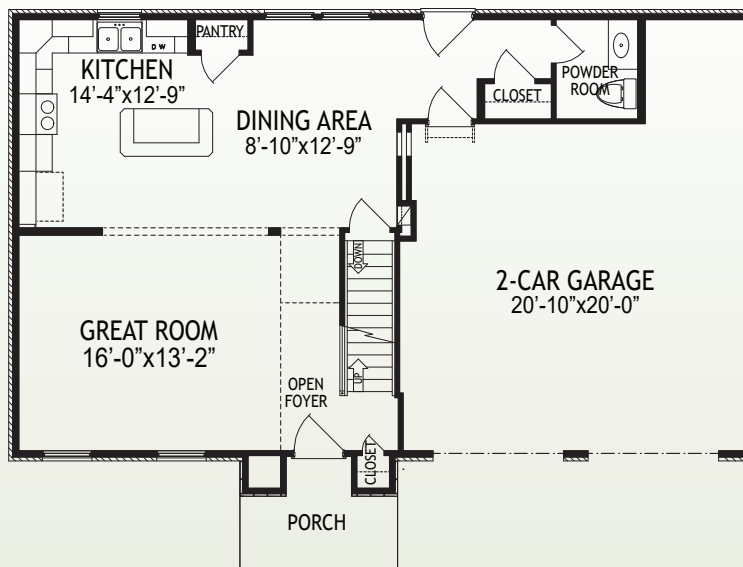
**4**  
Bedrooms

**2**  
Full Baths

**2**  
Half Baths

**D**  
Deck

**2**  
Car Garage



## 1st Floor

[www.arlinghaus.com](http://www.arlinghaus.com)

Brochure is for illustration purposes only. Plan and pricing subject to change.



08/04/22

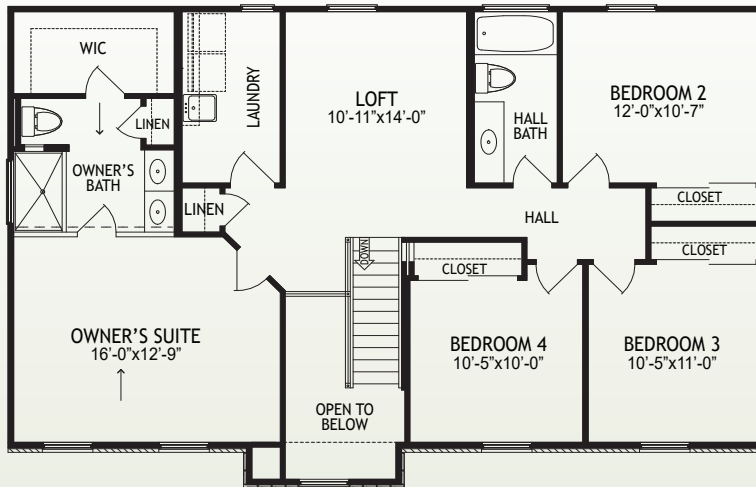


# The Jefferson

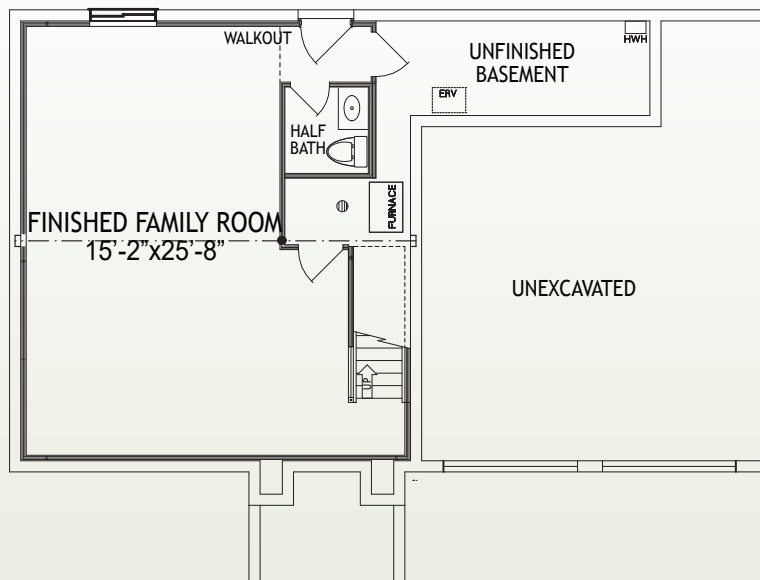
at North Pointe

## Page 2

1326 Dominion Trail • Hebron, Ky 41048  
2,601 SF • Home Site NP428



2nd Floor



Lower Level

[www.arlinghaus.com](http://www.arlinghaus.com)

Brochure is for illustration purposes only. Plan and pricing subject to change.



08/04/22